



Ministry of Finance Republic of Indonesia
Directorate General of Customs and Excise



PUBLIC AVAILABILITY OF CUSTOMS INFORMATION IN INDONESIA



HOW TO DISEMINATE PUBLIC INFORMATION

1 Official Website

On the official customs website there is information about customs related news, customs and excise facilities, and DGCE's regulatory directory

Mass Media

DJBC has TV and radio channel called KanalBC and publishes the Customs News magazine

4

5

Contact Center

DGCE has Bravo BeaCukai in order to engage with different type of stakeholders, we indulge them by providing omnichannel type of communication: telephone service, email, social media, and Bravo Bea Cukai mobile

2 Disemination or Seminars

DGCE holds several diseminations, seminars, and dialogue sessions with stakeholders.

3

Trade Portal

DGCE works together with other Ministries and Institutions, Port / Airport Entities, Financial / Banking Entities, and Service Users in order to increase transparency, consistency and efficiency of the export / import process.



DGCE's Official Website



www.beacukai.go.id



DGCE's Regulations Archive

← → ↻ ⓘ Not secure | peraturan.beacukai.go.id

Direktori Peraturan DJBC

Menjadi Sistem Terlengkap Untuk Browse Peraturan Terkait Dengan Direktorat Jenderal Bea dan Cukai

Home Portal Wiki Perijinan Info PPJK Info Kurs Info Tarif Layanan Informasi Pengaduan Help Center

BROWSE BERDASARKAN

JENIS | PENERBIT | HAL | TAHUN

- Undang-undang
- Peraturan Pemerintah
- Peraturan Presiden
- Keputusan Presiden
- Instruksi Presiden
- Keputusan Menteri Keuangan
- Peraturan Menteri Keuangan
- SE Menteri Keuangan
- Keputusan Dirjen Bea Cukai
- Peraturan Dirjen Bea Cukai
- SE Dirjen Bea Cukai
- Peraturan Menteri Perdagangan
- Peraturan Menteri Perindustrian
- Surat Direktur Jenderal
- Peraturan Instansi Lain

TAG PERATURAN

administrasi ahli kepabeanan ak-fta alkohol api apit arsip audit awak sarana banding bank devisa bank persepsi barang modal barang penumpang barang tertentu bc 1.0 bc 1.1 bc 1.2 bc 1.3 bc 2.1 bc 2.3 bc 3.0 bc 3.1 bc 4.0 bea keluar bea masuk bkc bpj btbmi btki bunga cept cerutu ck-1 ck-2 ck-3 ck-4 crt cukai customs bond daerah bebas denda administrasi disiplin dog dokumen

Posisi Anda : Home

SELAMAT DATANG ...

Terimakasih telah menggunakan Sistem Direktori Peraturan Bea dan Cukai. Anda dapat pencarian peraturan yang terkait dengan Bea dan Cukai. Mulai dari Undang-undang, Peraturan Pemerintah, Peraturan Menteri Keuangan dan seterusnya sampai dengan Keputusan Direktur Jenderal Bea Cukai, serta peraturan dari instansi lain yang terkait dengan DJBC.

Untuk lebih mudah dalam menggunakan sistem browse peraturan ini, silahkan baca petunjuk penggunaan sistem ini dengan mendownload [Petunjuk Penggunaan Direktori Peraturan DJBC](#)

FITUR BARU

- Regulation Link**
Adalah sebuah mekanisme penyajian informasi sebuah peraturan dimana dari sebuah peraturan dapat diketahui link apa saja terhadap peraturan lain, seperti mengubah atau telah diubah, menghapus, mengingat dan lainnya.
Fitur ini akan memudahkan kita dalam mencari hubungan sebuah peraturan dengan peraturan lainnya.
- Tag Searching**
Yaitu kita bisa menemukan sebuah atau beberapa peraturan berdasarkan sebuah tag atau kata kunci. Kata kunci ini adalah kata-kata yang banyak terdapat dalam sebuah peraturan.
Untuk menggunakannya, kita tinggal mengklik pada daftar tag peraturan dalam sistem ini, otomatis akan ditampilkan daftar peraturan yang relevan dengan tag yang dipilih.

www.peraturan.beacukai.go.id



Indonesia National Single Window's Portal



**PENGELOLA PORTAL
INDONESIA NATIONAL SINGLE WINDOW
KEMENTERIAN KEUANGAN**

[HOME](#) [PROFIL](#) [INFORMASI](#) [APLIKASI INSW](#) [TRACKING](#) [USER MANUAL](#) [LOGIN](#) 

Indonesia National Trade Repository



HS Code Information

On this feature contain all information about BTKI, Tariff, Rules Of Origin and Import-Export Regulation. Actually, from this section you will get all information.



LARTAS Information

HS Code Information that are specifically presented to you about Import and Export Permit and Regulation that issued by Indonesian Government.



Regulation Repository

This section describes how to get licenses that must be fulfilled according import or export regulations as described in LARTAS (Restriction and Prohibitions).



Rules Of Origin

Product Specification Rules (Rules Of Origin) called ROO that provide information about an item when it is imported or exported between countries in ASEAN.



List of Authorized Traders

Contains information on the list of authorised economic operators, drawn and compiled following the establishment of the Programme of Authorised Economic Operators.



Trade Simulation

Information about regulation, tariff and exchange rates, you can estimate how many cost of importation, licensing should be prepared and how the process and others.



Exchange Rate

Give you information the value of exchange rates that is used in Indonesian Customs inhouse applition such as SAP Impor, SAP Kawasan Berikat, SAP Ekspor and others.



Manifest Information

This menu give you about BC 1.1 information which important for importer to know before send impor customs declaration.

www.insw.go.id



Mass Media



Official Magazine on Customs
and Excise Information

Available on Google Play and
Apps Store



Official Communication Channels for
Directorate General of Customs and
Excise



Seminars and Disemination



DGCE often holds diseminations and seminars about new regulations and facilities by inviting stakeholders as participants



DGCE CHANNELS



E-MAIL

info@customs.go.id



TWITTER/FACEBOOK

INSTAGRAM/YOUTUBE



[@beacukaiRI](#)

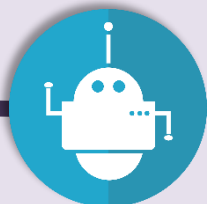


LIVE CHAT BRAVO
BEACUKAI





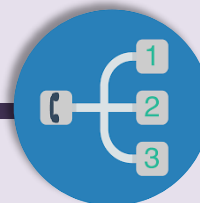
DGCE's Contact Center



CHATBOT



**INTERACTIVE
VOICE RESPONSE**

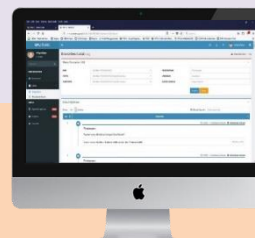


BRAVO

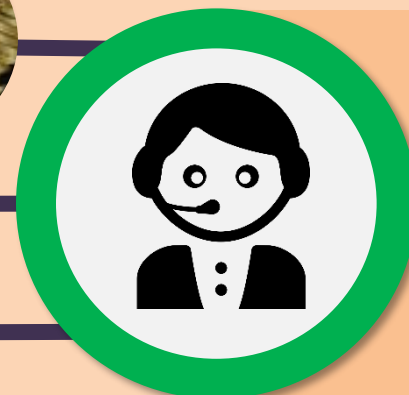
BEA CUKAI



**DEDICATED
ENGLISH
AGENTS**



SPLIT



English



BRAVOPEDIA



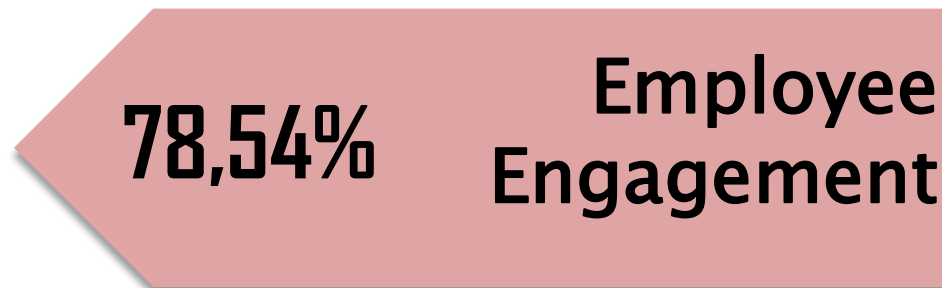
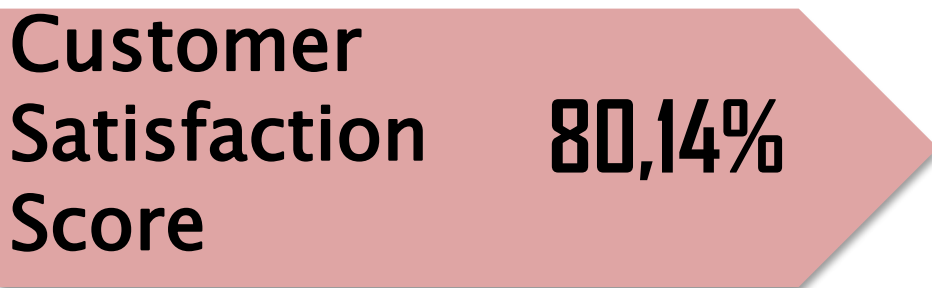
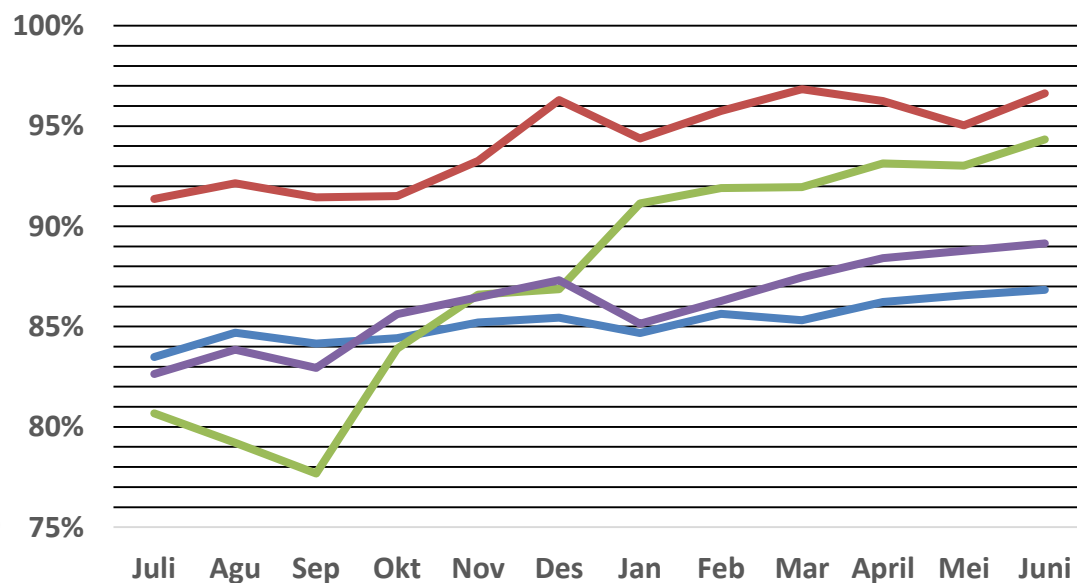
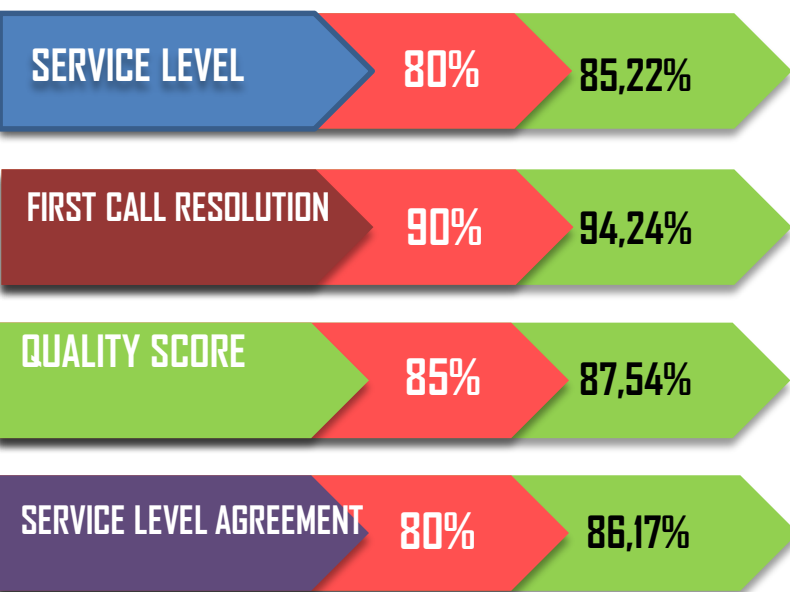


Type of Services





OPERATIONAL PERFORMANCE



BACK OFFICE ROOM



OPERATION ROOM



BREAKTHROUGH AREA



BRavo BEA CUKAI



Our Challenges



**Faster Delivery
information**



**The change of
communication style**



**The high demand
of information**



**Expanding the
scope of service**





Legal Drafting Procedures in DGCE





Public Hearing

ORGANIZER



Public Hearing is conducted by:

- The Regulation Proposer Unit ; and or
- Directorate of Objections, Appeals, and Regulations.

OBJECT



- Director General of Customs and Excise Regulations
- Minister of Finance Regulations

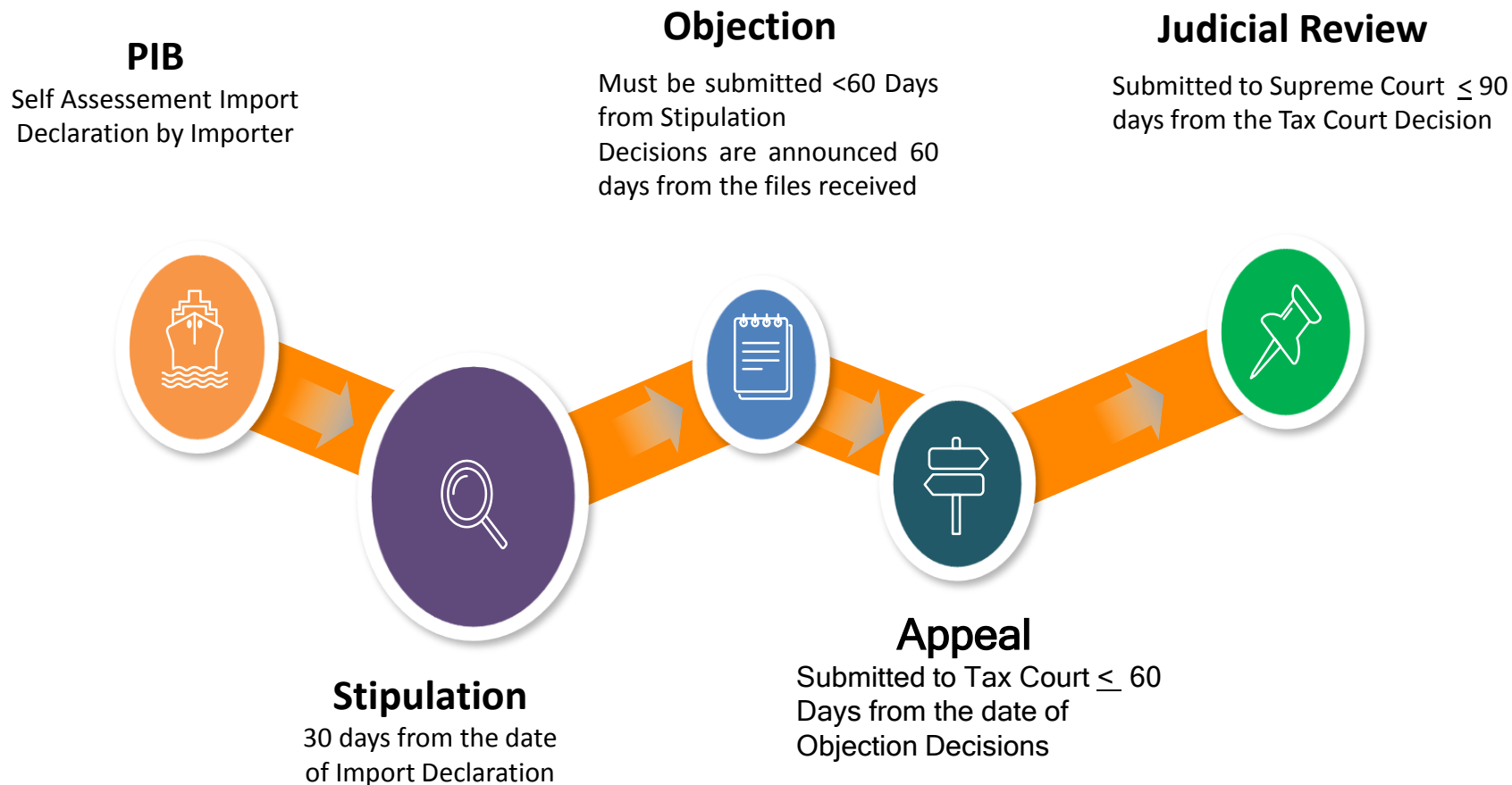
INVOLVEMENT



- DGCE Stake Holders
- DGCE Staf
- Media partner
- E-mail :
aspirasi.bc@customs.go.id



Appeals and Reviews Procedures





THANK YOU

Directorate General of Customs and Excise
Ministry of Finance