



# COMCEC Project Funding

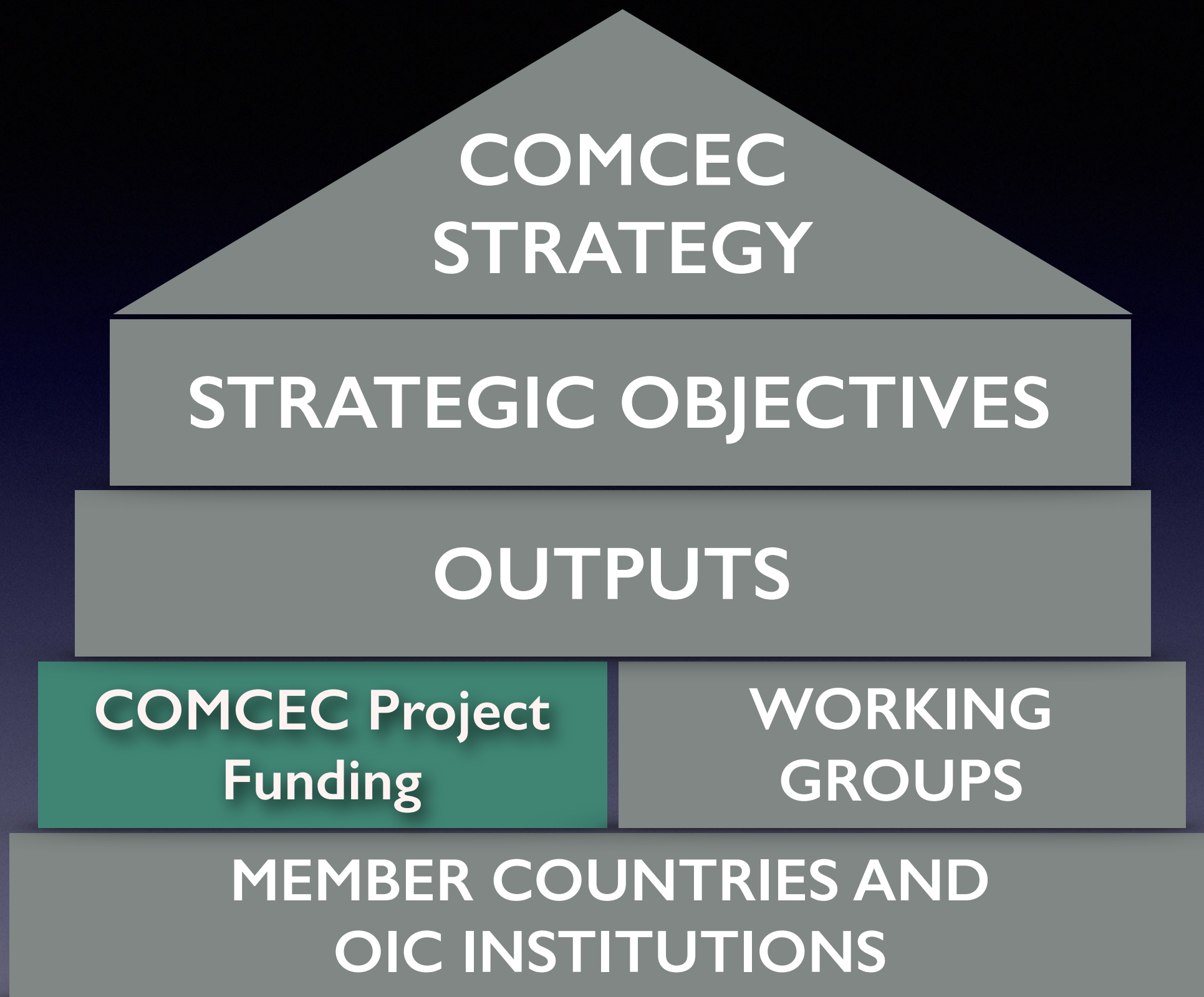
## Rules and Procedures *at a Glance*

*PCM Group*

[pcm.comcec.org](http://pcm.comcec.org)



**MEMBER DRIVEN  
MECHANISM**





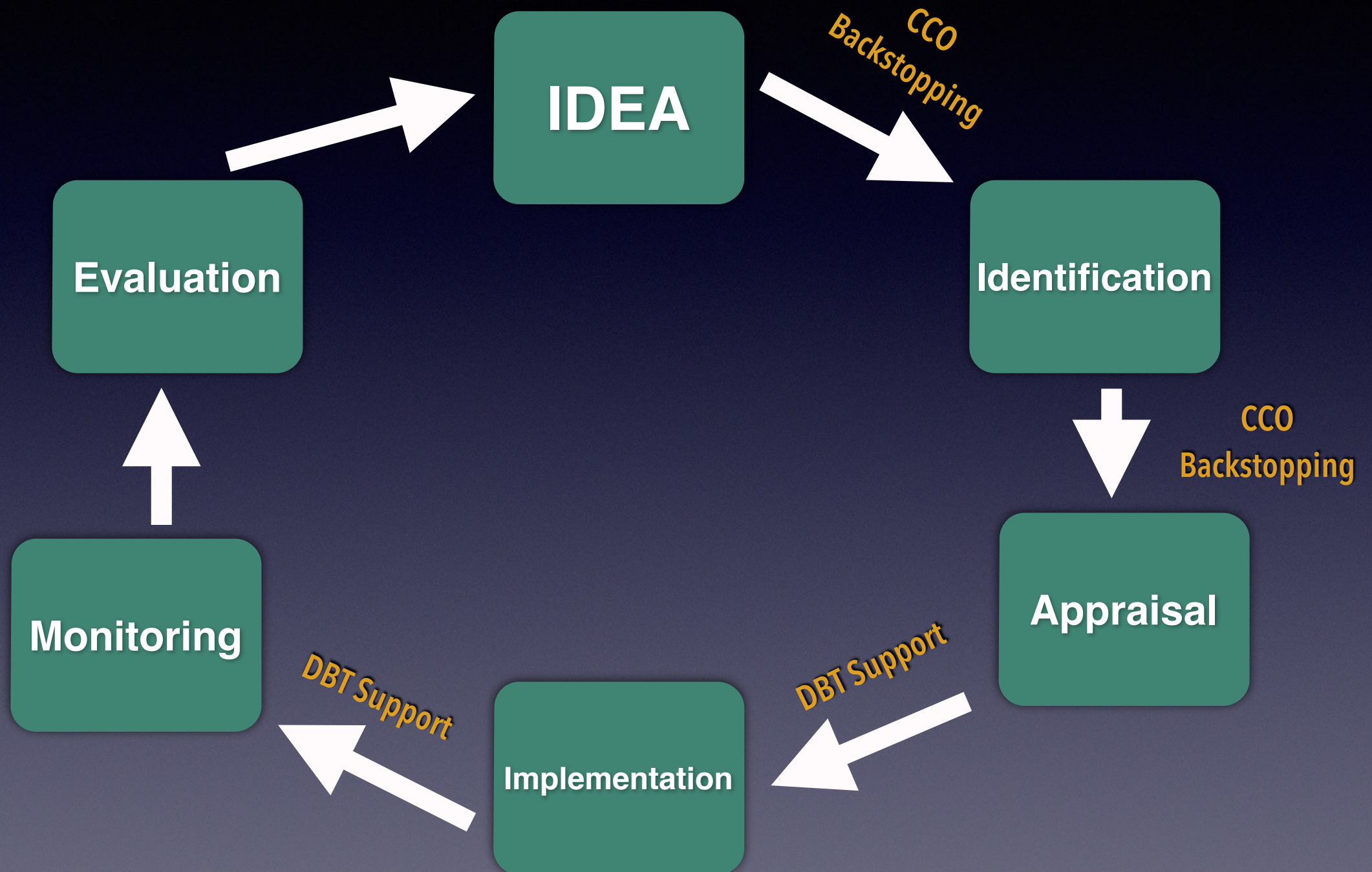
# COMCEC Project Funding

- ✓ Simple Rules
- ✓ Clearly defined Financial Framework
- ✓ Flexible Procedures
- ✓ Backstopping by the CCO
- ✓ Tech. Support by Development Bank of Turkey





# The Cycle





# Potential Project Owners

- ✓ **Member Countries** (relevant ministries and other public institutions) registered to the Working Groups
- ✓ **OIC Institutions** (operating in the field of economic and commercial cooperation)





# Project Selection Ladder

## SECTORAL THEMES

### MULTILATERALISM

Promoting Multilateralism  
(at least 3 Member States)

### OUTPUT AREAS

Increasing Productivity  
Regulatory Framework and Institutional Capacity  
Reliable and Up-To-Date Data  
Market Performance and Access

### STRATEGIC OBJECTIVE

Increasing the productivity of agriculture sector and sustaining the food security in the COMCEC region

### PRINCIPLES

Enhancing Mobility  
Strengthening Solidarity  
Improving Governance





## SECTORAL THEMES

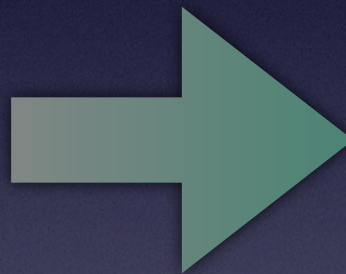
- ✓ Ensuring sustainable water management
- ✓ Expanding usage of modern irrigation systems
- ✓ Improving business environment and policies in order to attract more agricultural FDIs
- ✓ Enhancing institutional and human capacity for improving national agricultural statistics system
- ✓ Integration of agricultural statistics into the International Statistical Systems
- ✓ **Facilitating small holders' access to finance**
- ✓ Strengthening the regulatory framework to improve agricultural marketing systems
- ✓ Improving legal and institutional framework in order to establish and strengthen farmer organizations
- ✓ Developing financing models for well-functioning farmer organizations
- ✓ Promoting the utilization of modern agricultural techniques
- ✓ Developing financial models for promoting agricultural value chains
- ✓ Promoting access to international markets





# Project Type

## TECHNICAL COOPERATION CAPACITY BUILDING



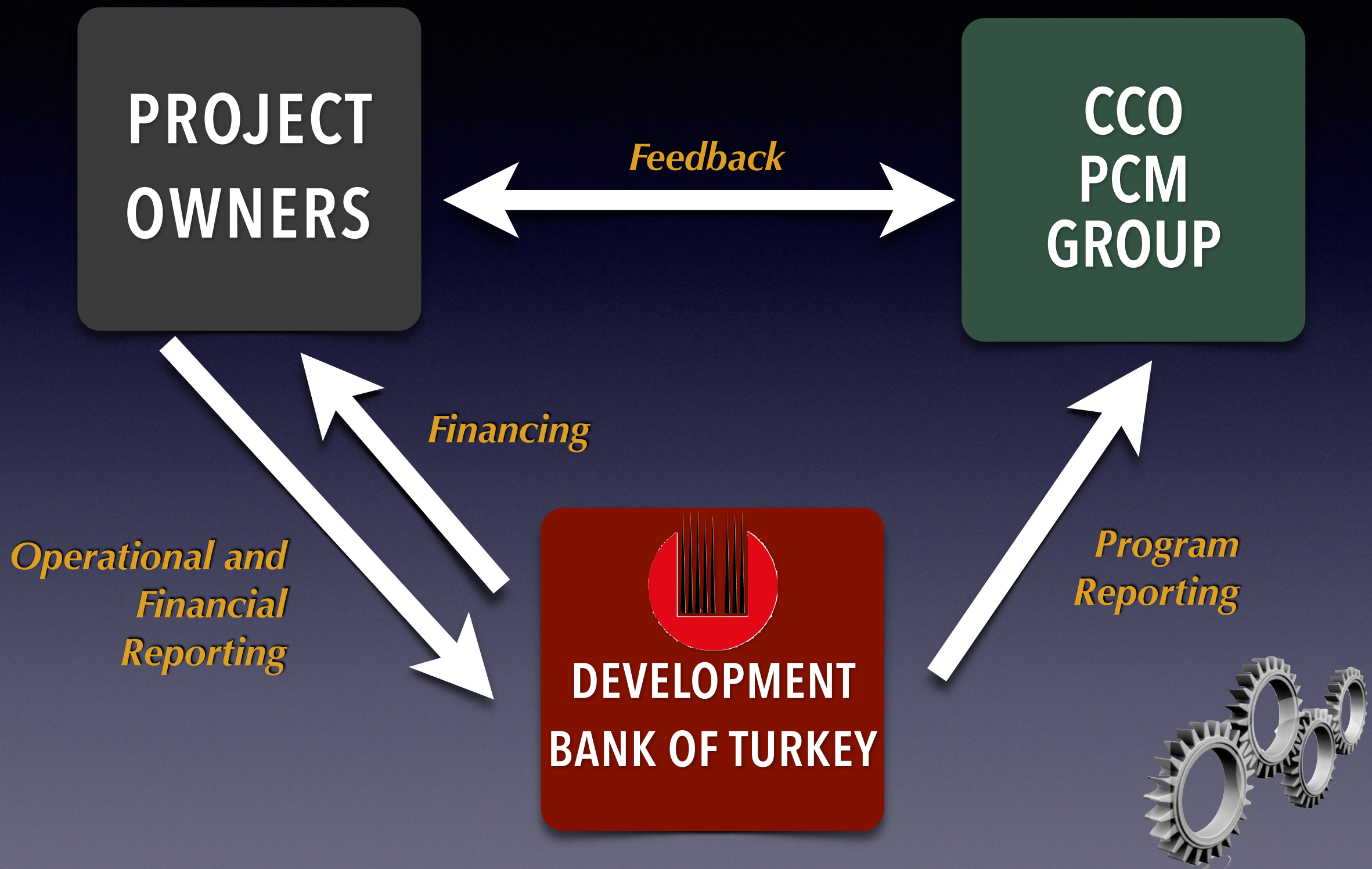
Research and analytical studies  
Strategies, Guides, Roadmaps  
E-Discussion  
Community of Practice  
Study visits  
Trainings  
Exchange programs among officials  
Needs Assessments and Impact Analysis  
Peer Assist  
Conferences, Workshops  
Focus Group  
Knowledge Fair  
Multi-Stakeholder Consultation  
Expert Panel

see sample activity list...





# The Mechanism





# Grant Limits

<i>Project Owner</i>	<i>Project Budget Lower Limit (USD)</i>	<i>Project Budget Upper Limit (USD)</i>	<i>Minimum Co-Finance Rates by the PO</i>	<i>CCO Grant Limits (USD)</i>
<i>Member Countries</i>	<b>100.000</b>	<b>250.000</b>	<b>%10</b>	<b>90.000-225.000</b>
<i>OIC Institutions</i>	<b>50.000</b>	<b>100.000</b>	<b>%25</b>	<b>37.500-75.000</b>



# First Call for Project Proposals

- ✓ *September 2<sup>nd</sup>, 2013: First Call for Project Proposals*
- ✓ *Great interest from countries and OIC Institutions*
- ✓ *23 Member Countries and 3 OIC Institutions submitted projects*
- ✓ *15 project proposals were final-listed*





# Second Call for Project Proposals *September 2014*

✓ *access the online submission system via [pcm.comcec.org](http://pcm.comcec.org)*





✓ Online submission system --> [pcm.comcec.org](http://pcm.comcec.org)

COMCEC

Cooperation Areas Working Groups PCM Documents Archive Members Contact Us

COMCEC Project Funding

[www.comcec.org](http://www.comcec.org)

**FREQUENTLY ASKED QUESTIONS**

**What Is Project Cycle Management (PCM)?**

PCM is basically a methodology that facilitates the realization of ideas through projects. It transforms ideas into projects with concrete activities, budget and timeline among others. It envisions several steps starting from identification, appraisal and implementation to monitoring and evaluation.

**Who can submit projects?**

**What kind of projects are financed?**

**What are the project selection criteria?**

**What type of activities could be realized through projects?**

**Who are the main actors? What are their responsibilities ?**

**When will it start? How can I submit projects ?**

**What are the details for project implementation and financing ?**

**Submit Your Project Here**

**PCM at a Glance**

PCM is basically a methodology that facilitates the realization of ideas through projects.

**Documents**

The documents explaining the basic format.



# ONLINE PROJECT FICHE

## SIGN IN

username

password

Login

[Forgot Password ?](#)  
[Where can I get username?](#)

This site is best viewed in Google Chrome and Mozilla Firefox. (Recommended resolution: 800x600 pixel)



# PROJECT FICHE for COMCEC Funded Projects

LOGOUT

## Reminder

Please Consult the CCO if you have questions regarding any section of the Project Fiche before submitting Your Project Proposals.

## Reminder

Please note that the project submissions will be only in **ENGLISH**.

## Documents

[Program Implementation Guideline](#)  
[Project Fiche](#)  
[Logical Framework Matrix](#)  
[Visibility Manual](#)  
[CV Sample for Project Personnel](#)  
[Sample Project Fiche](#)  
[Sample Logical Framework Matrix](#)

**Reference Documents**



## WELCOME

USER :Turkey – Ministry of Culture and Tourism  
COOPERATION AREA :Tourism

**User Identification**



**Add Project**



## BASIC INFORMATION

### Project Title

### Cooperation Area

Tourism

### Project Owner

Turkey – Ministry of Culture and Tourism

### Reminder for Responsible Authority and Contact Person Sections

You are expected to provide detailed information for two persons designated as responsible authority and contact person. Responsible authority should be a senior official, at least at the General Director level, who will be responsible for the overall management of the project. The Contact person, on the other hand, should preferably be the focal point for the relevant working group.

### Responsible Authority

Name :

Title :

Postal  
address:

Phone :

Fax :

E-mail :

### Contact Person

Name :

Title :

Postal address:

Phone :

Fax :

E-mail :

User-Friendly  
Interface



Previous

Next



# The Second Call - What's New?

- ✓ *Independent appraisal of project proposals*
- ✓ *Upper limit for Project Coordinator's and Project Expert's fees*
- ✓ ***New Criteria!** - Sectoral Themes of WG Meetings*
- ✓ *Revised durations for project submission periods*





# New Timeline

Early September	Call for project proposals
End of September	Submission of preliminary proposals (30 days)
October	Appraisal of _____
Early November	Declaration of the short list
Mid- December	Submission of ____
Early February	Final appraisal and declaration of the final list
Early March	Signing operational agreements
April 1st - December 31st	Project Implementation Period (9 months max.)



# New Timeline

*Only  
5 Days  
left*







pcm.comcec.org

Thank You

*PCM Group*  
[pcm.comcec.org](http://pcm.comcec.org)