



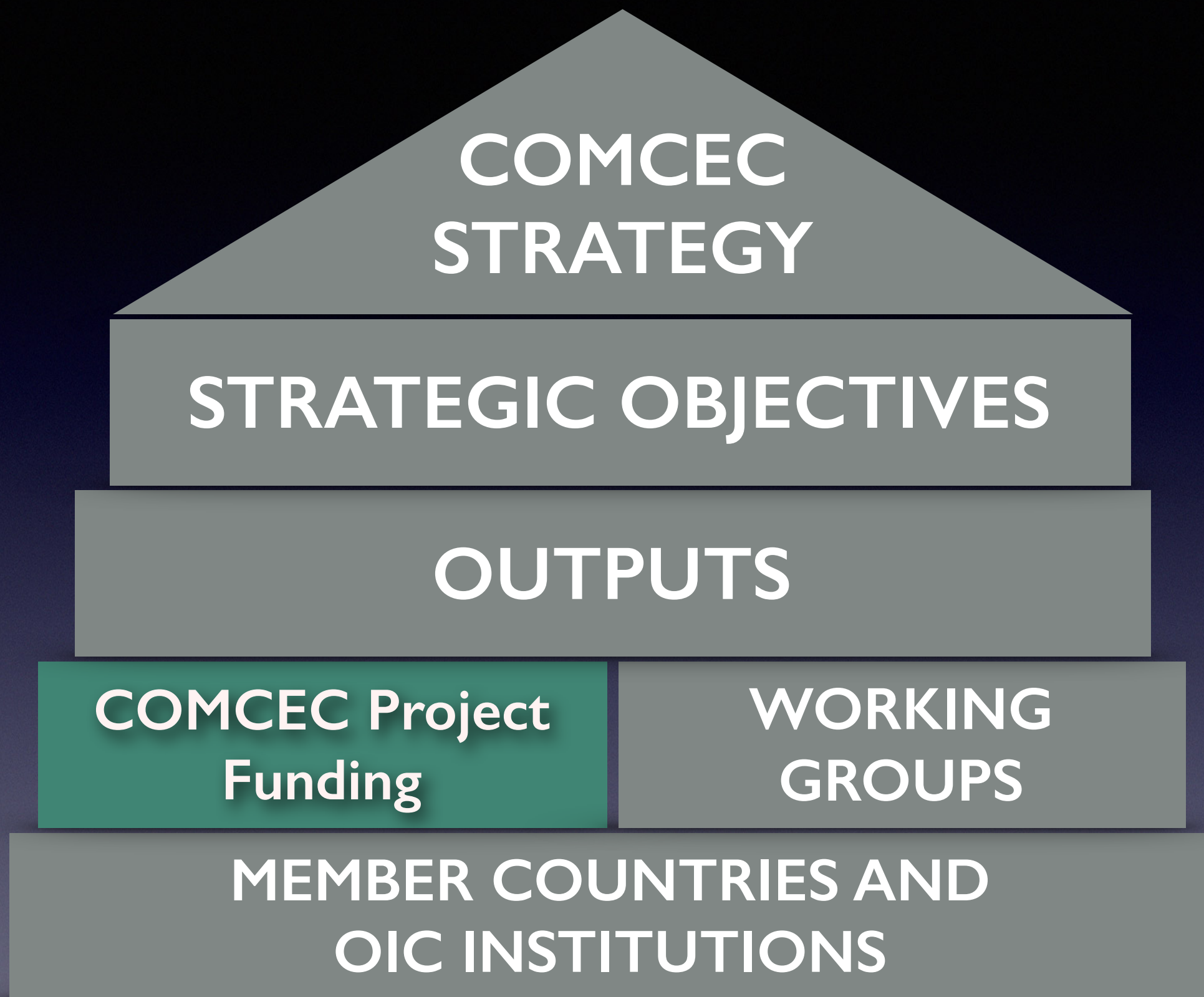
COMCEC Project Funding

Rules and Procedures *at a Glance*

PCM Group

pcm.comcec.org

MEMBER DRIVEN
MECHANISM

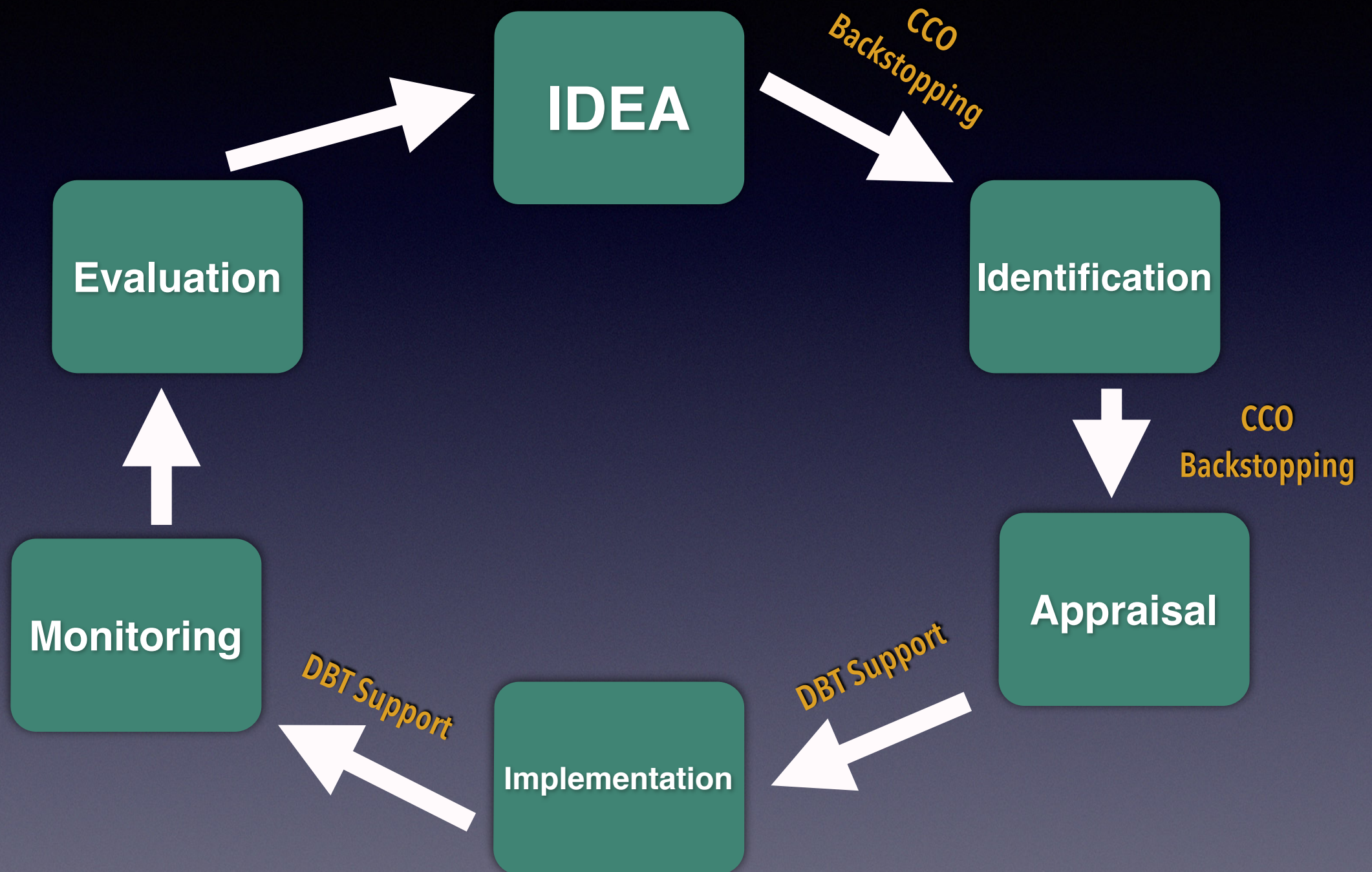


COMCEC Project Funding

- ✓ Simple Rules
- ✓ Clearly defined Financial Framework
- ✓ Flexible Procedures
- ✓ Backstopping by the CCO
- ✓ Tech. Support by Development Bank of Turkey



The Cycle



Potential Project Owners

- ✓ **Member Countries** (relevant ministries and other public institutions) registered to the Working Groups
- ✓ **OIC Institutions** (operating in the field of economic and commercial cooperation)

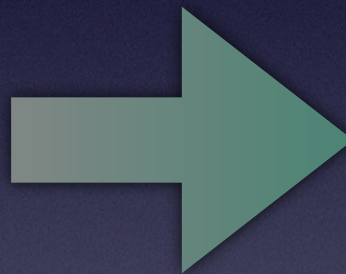


Project Selection Ladder



Project Type

TECHNICAL COOPERATION CAPACITY BUILDING

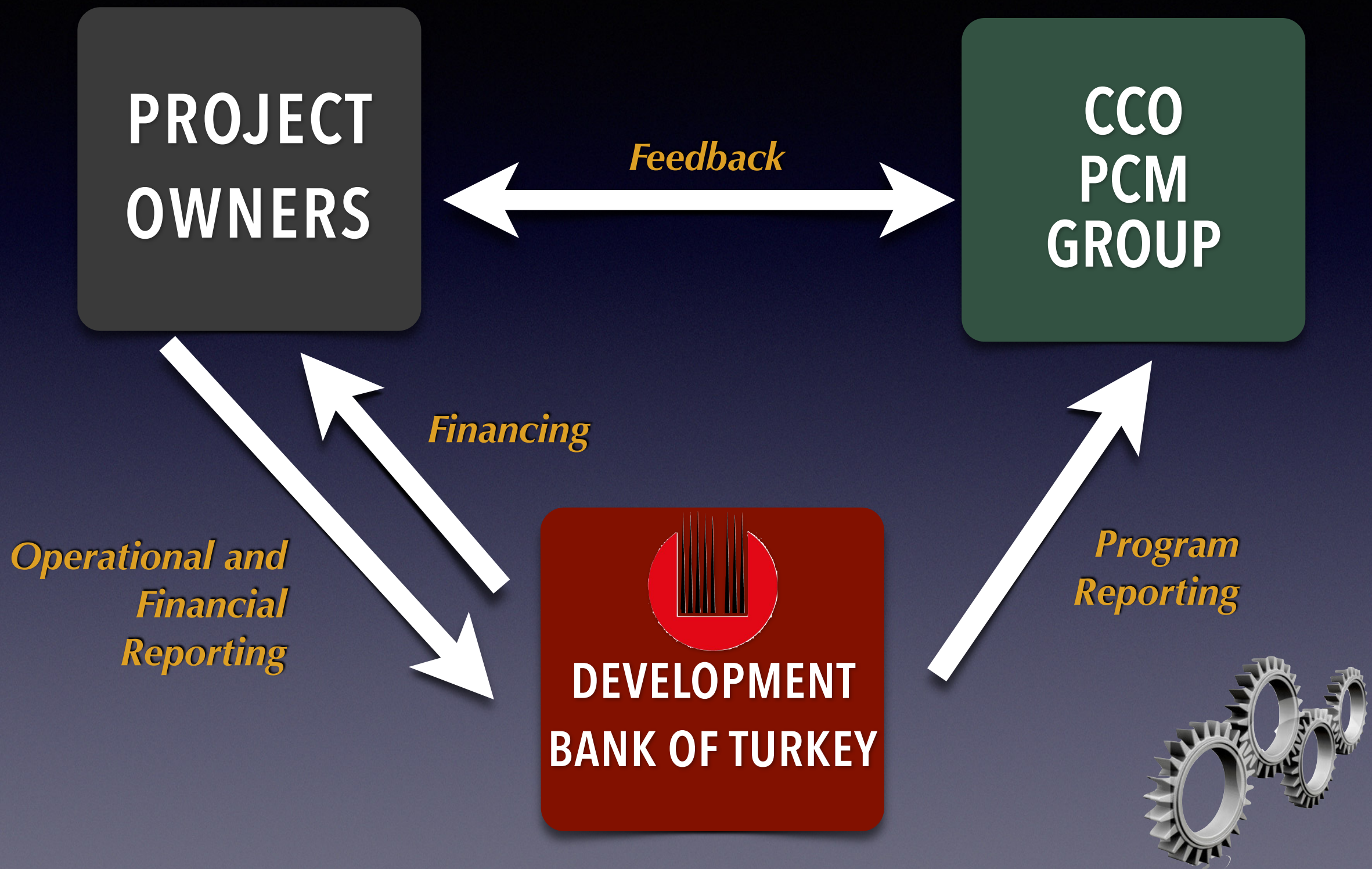


Research and analytical studies
Strategies
Guides
Community of Practice
Study visits
Trainings
Exchange programs among officials
Needs Assessments and Impact Analysis
Visibility/Publicity/Promotional Activities
Conferences
Workshops
Knowledge Fair
Multi-Stakeholder Consultation
Expert Panel

see sample activity list...



The Mechanism



Grant Limits

<i>Project Owner</i>	<i>Project Budget Lower Limit (USD)</i>	<i>Project Budget Upper Limit (USD)</i>	<i>Minimum Co-Finance Rates by the PO</i>	<i>CCO Grant Limits (USD)</i>
<i>Member Countries</i>	100.000	250.000	%10	90.000-225.000
<i>OIC Institutions</i>	50.000	100.000	%25	37.500-75.000

First Call for Project Proposals

- ✓ *September 2nd, 2013: First Call for Project Proposals*
- ✓ *Great interest from countries and OIC Institutions*
- ✓ *98 project proposals from Member Countries and OIC Institutions*
- ✓ *15 project proposals were final-listed*



Second Call for Project Proposals *September 2014*

✓ *access the online submission system via pcm.comcec.org*



✓ Online submission system --> pcm.comcec.org

The screenshot displays the official website of the Standing Committee for Economic and Commercial Cooperation of the Organization of Islamic Cooperation (COMCEC). The header features the COMCEC logo and name in large green letters, with the full name in English and Arabic. A navigation menu includes links for COMCEC, Cooperation Areas, Working Groups, PCM, Documents, Archive, Members, and Contact Us. A large banner for 'PCM COMCEC Project Funding' is prominently displayed, with the website URL www.comcec.org below it. A red arrow points from the banner to a green button labeled 'Submit Your Project Here', which is highlighted with a red rectangular border. Below the banner, a 'FREQUENTLY ASKED QUESTIONS' section is visible, with the first question expanded: 'What Is Project Cycle Management (PCM)?'. The answer explains that PCM is a methodology for realizing ideas through projects. Other questions listed include 'Who can submit projects?', 'What kind of projects are financed?', 'What are the project selection criteria?', 'What type of activities could be realized through projects?', 'Who are the main actors? What are their responsibilities?', 'When will it start? How can I submit projects?', and 'What are the details for project implementation and financing?'. On the right side, a 'PCM at a Glance' section provides a brief overview of the methodology, and a 'Documents' section mentions documents explaining the basic format.

COMCEC

Standing Committee
for Economic and Commercial Cooperation of the
Organization of Islamic Cooperation

COMCEC Cooperation Areas Working Groups PCM Documents Archive Members Contact Us

PCM COMCEC Project Funding

www.comcec.org

Submit Your Project Here

FREQUENTLY ASKED QUESTIONS

What Is Project Cycle Management (PCM)?

PCM is basically a methodology that facilitates the realization of ideas through projects. It transforms ideas into projects with concrete activities, budget and timeline among others. It envisions several steps starting from identification, appraisal and implementation to monitoring and evaluation.

Who can submit projects?

What kind of projects are financed?

What are the project selection criteria?

What type of activities could be realized through projects?

Who are the main actors? What are their responsibilities ?

When will it start? How can I submit projects ?

What are the details for project implementation and financing ?

PCM at a Glance

PCM is basically a methodology that facilitates the realization of ideas through projects.

Documents

The documents explaining the basic format.

ONLINE PROJECT FICHE

SIGN IN

username

password

Login

[Forgot Password ?](#)
[Where can I get username?](#)

This site is best viewed in Google Chrome and Mozilla Firefox. (Recommended resolution: 800x600 pixel)

PROJECT FICHE for COMCEC Funded Projects

LOGOUT

Reminder

Please Consult the CCO if you have questions regarding any section of the Project Fiche before submitting Your Project Proposals.

Reminder

Please note that the project submissions will be only in **ENGLISH**.

Documents

[Program Implementation Guideline](#)
[Project Fiche](#)
[Logical Framework Matrix](#)
[Visibility Manual](#)
[CV Sample for Project Personnel](#)
[Sample Project Fiche](#)
[Sample Logical Framework Matrix](#)

Reference Documents



WELCOME

USER :Turkey – Ministry of Culture and Tourism
COOPERATION AREA :Tourism

User Identification



Add Project

BASIC INFORMATION

Project Title

Cooperation Area

Tourism

Project Owner

Turkey – Ministry of Culture and Tourism

Reminder for Responsible Authority and Contact Person Sections

You are expected to provide detailed information for two persons designated as responsible authority and contact person. Responsible authority should be a senior official, at least at the General Director level, who will be responsible for the overall management of the project. The Contact person, on the other hand, should preferably be the focal point for the relevant working group.

Responsible Authority

Name :

Title :

Postal
address:

Phone :

Fax :

E-mail :

Contact Person

Name :

Title :

Postal address:

Phone :

Fax :

E-mail :

User-Friendly
Interface



Previous

Next

The Second Call - What's New?

- ✓ *The independent appraisal of project proposals*
- ✓ *Revised durations for project submission periods*
- ✓ *Upper limit for Project Coordinator's and Project Expert's fees*
- ✓ ***New Criteria!** - Sectoral Themes of WG Meetings*



Sectoral Themes in the Transport Sector

- ✓ Improving the regulatory framework in the member states for PPPs in infrastructure
- ✓ Effective Risk Management Practices in PPP Implementations
- ✓ Increasing the Qualifications of Human Resources for Developing Transport Infrastructure and Services
- ✓ Identifying and disseminating global best-practices in MFT
- ✓ Improving the institutional capacity of member states to develop MFT in the OIC region
- ✓ Increasing the Cross-Border MFT Services in the member states
- ✓ Improving Access to Intermodal Transport Market
- ✓ Initiating/Strengthening Legislative, Institutional, and Regulatory Reforms in the Airport Industry
- ✓ Increasing public-private dialogue in the member countries to improve air services
- ✓ Deregulating the Airline Infrastructures and Operations
- ✓ Developing the Capacity of Seaports
- ✓ Increasing Seaport Efficiency
- ✓ Developing sustainable urban transportation systems in the OIC Megacities
- ✓ Increasing ICT applications in urban transportation systems in the OIC Megacities
- ✓ Developing Public Transport in the OIC megacities



Timeline

Early September	Call for project proposals
End of September	Submission of preliminary proposals (30 days)
October	Appraisal of _____
Early November	Declaration of the short list
Mid- December	Submission of ____
Early February	Final appraisal and declaration of the final list
Early March	Signing operational agreements
April 1st - December 31st	Project Implementation Period (9 months max.)



pcm.comcec.org

Thank You

PCM Group
pcm.comcec.org