



REPUBLIC OF TURKEY,
MINISTRY OF FAMILY AND
SOCIAL POLICIES



TURKISH EXPERIENCE FOR POVERTY ALLEVIATION AND ENHANCING HUMAN CAPITAL

Ersin KAYA- Social Policy Expert

27.06.2013



T.C.
AİLE VE
SOSYAL POLİTİKALAR
BAKANLIĞI

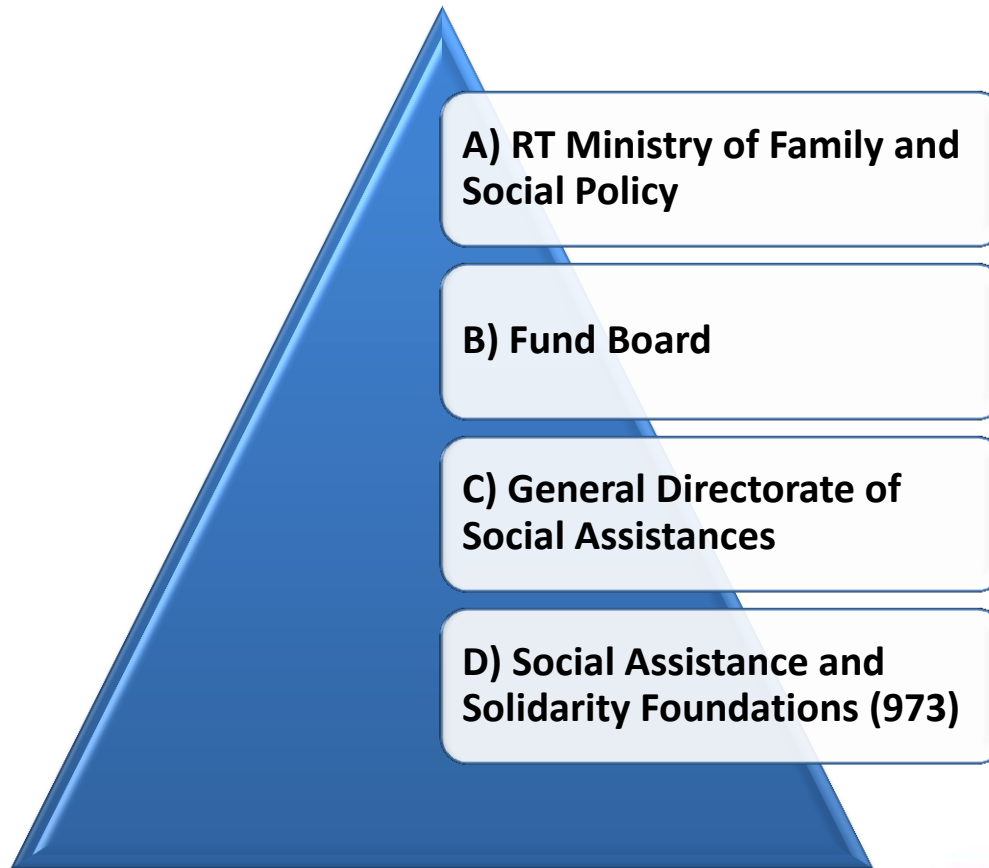
PRESENTATION PLAN

- 1. ORGANIZATIONAL STRUCTURE**
- 2. SOCIAL EXPENDITURES AND HUMAN DEVELOPMENT**
- 3. SOCIAL ASSISTANCE PROGRAMS & PROJECT SUPPORTS**
- 4. ESTABLISHING SOCIAL ASSISTANCE-EMPLOYMENT RELATION**
- 5. SOCIAL ASSISTANCE INFORMATION SYSTEM (SAIS)**
- 6. INTEGRATED SOCIAL ASSISTANCE SERVICES (ISAS) INFORMATION SYSTEM**
- 7. VISION OF 2023**
- 8. RECOMMENDATIONS**



T.C.
AİLE VE
SOSYAL POLİTİKALAR
BAKANLIĞI

Organizational Structure





T.C.
AİLE VE
SOSYAL POLİTİKALAR
BAKANLIĞI

C) DUTIES OF GDSA

To collect
resources of
Social Assistance
and Solidarity
Fund

To Develop
Strategies in the
field of Poverty
Alleviation and
Social Assistance

To Diminish
Poverty and the
Effects of Poverty
by means of
Social Assistance
Programs

To Create
Objective
Beneficiary
Determination
Criteria and
Central Social
Assistance
Database

To Carry out All
Social Assistance
Programs
provided by
Public Resources
and To Make
General Health
Insurance Income
Test



T.C.
AİLE VE
SOSYAL POLİTİKALAR
BAKANLIĞI

B) FUND BOARD

The decision board of Social Assistance and Solidarity Fund is the Fund Board.

- ***Minister of Family and Social Policy (Head)***
- ***Undersecretary of Prime Ministry,***
- ***Undersecretary of Ministry of Interior,***
- ***Undersecretary of Ministry of Health,***
- ***Undersecretary of Ministry of Finance,***
- ***Undersecretary of Ministry of Family and Social Policy,***
- ***General Director of Foundations***
- ***General Director of Social Assistances***



T.C.
AİLE VE
SOSYAL POLİTİKALAR
BAKANLIĞI

D) Social Assistance and Solidarity Foundations

- **Founded in every province and sub-provinces (973)**
- **Decision body is the 'Board of Trustees'.**
- **The head of the Board of Trustees is the Governor.**
- **Provide cash and in-kind assistances in accordance with the aim of the law.**
- **Serve as a bridge between the State and the poor citizens.**



T.C.
AİLE VE
SOSYAL POLİTİKALAR
BAKANLIĞI

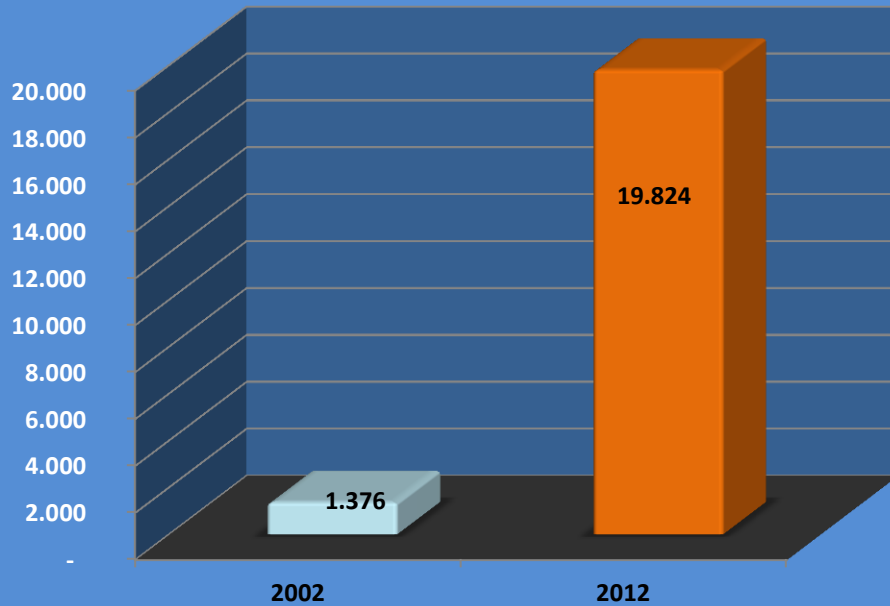
STRUCTURE OF THE BOARD OF TRUSTEES

<i>PROVINCES</i>	<i>SUB-PROVINCES</i>
Governor (Head of Foundation)	District Governor (Head of Foundation)
Mayor	Mayor
Provincial Director of Finance	Sub-provincial Director of Finance
Provincial Director of Education	Sub-Provincial Director of Education
Provincial Director of Health	Sub-provincial Chief of Health
Provincial Director of Agriculture	Sub-provincial Director of Agriculture
Provincial Director of Family and Social Policy	District Mufti
Provincial Mufti	Village Mukhtar
Village Mukhtar	Neighbourhood Mukhtar
Neighbourhood Mukhtar	Representatives of NGOs
Representatives of NGOs	Charitable Persons
Charitable Persons	

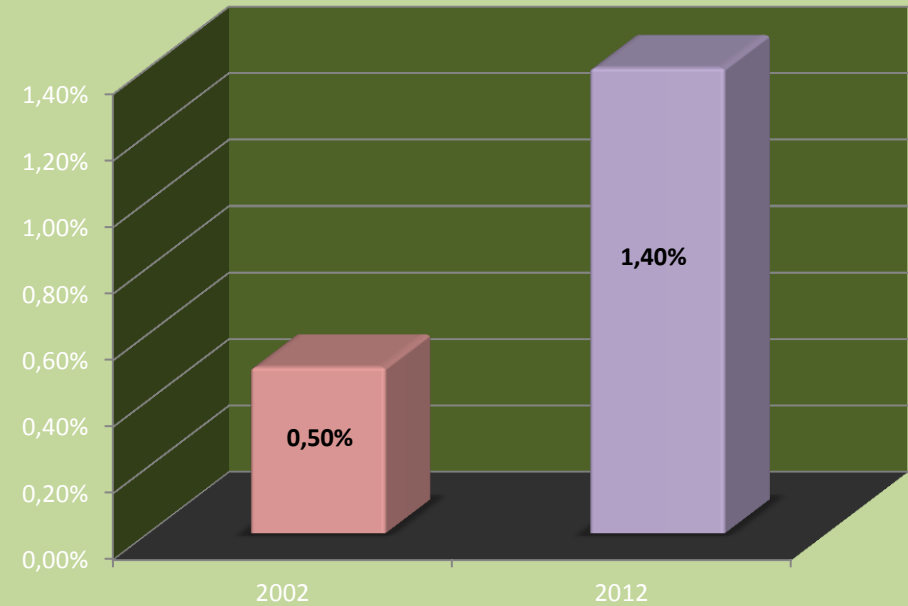


T.C.
AİLE VE
SOSYAL POLİTİKALAR
BAKANLIĞI

Social Expenditures by Years (Million TL)



The Rate of Social Expenditures to GDP

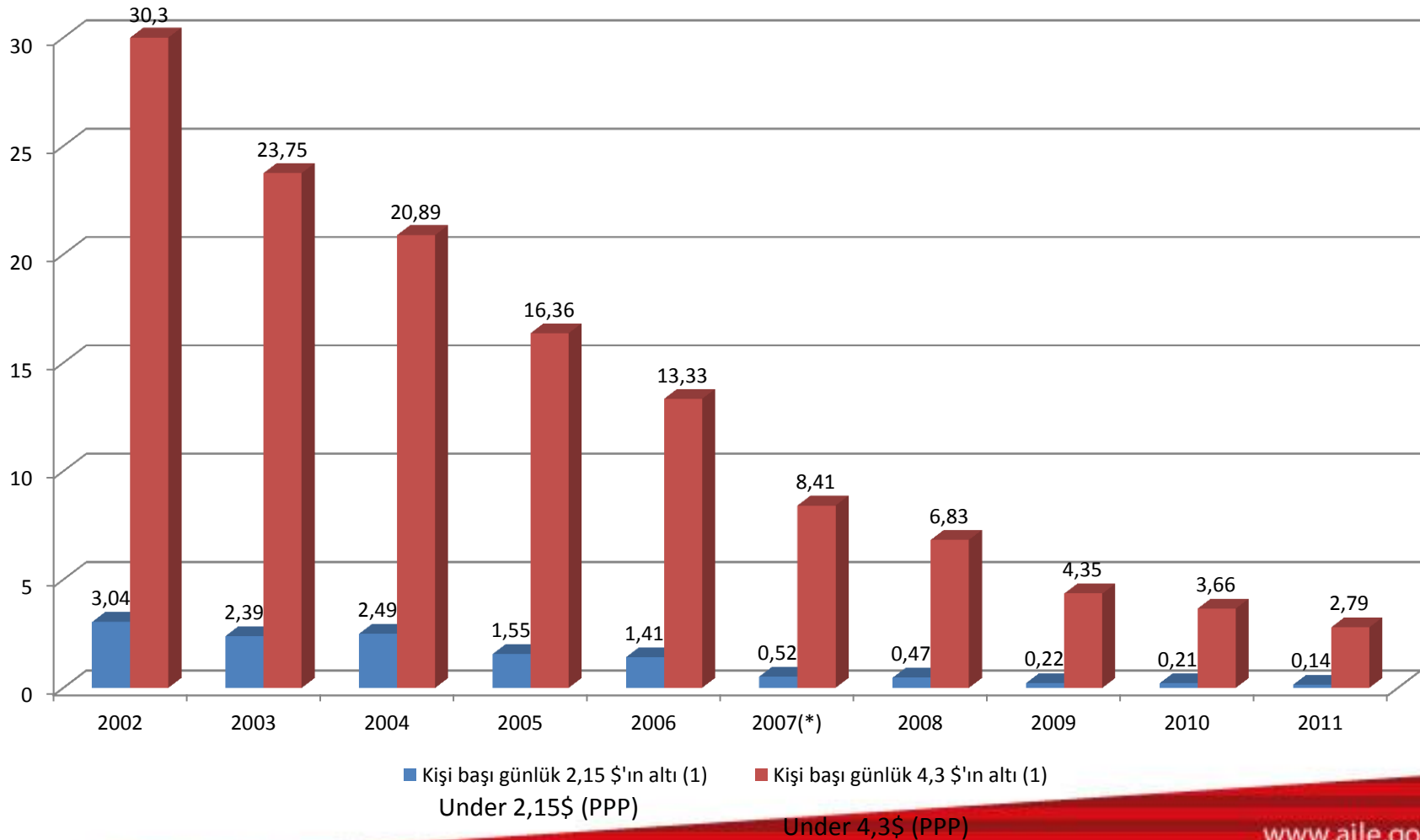




T.C.
AİLE VE
SOSYAL POLİTİKALAR
BAKANLIĞI

Poverty in Turkey

POVERTY THRESHOLD

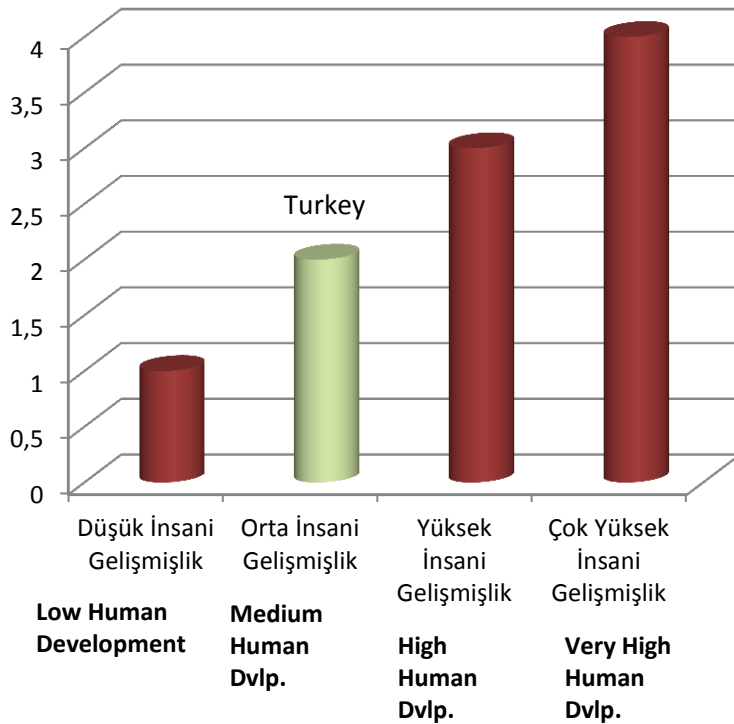




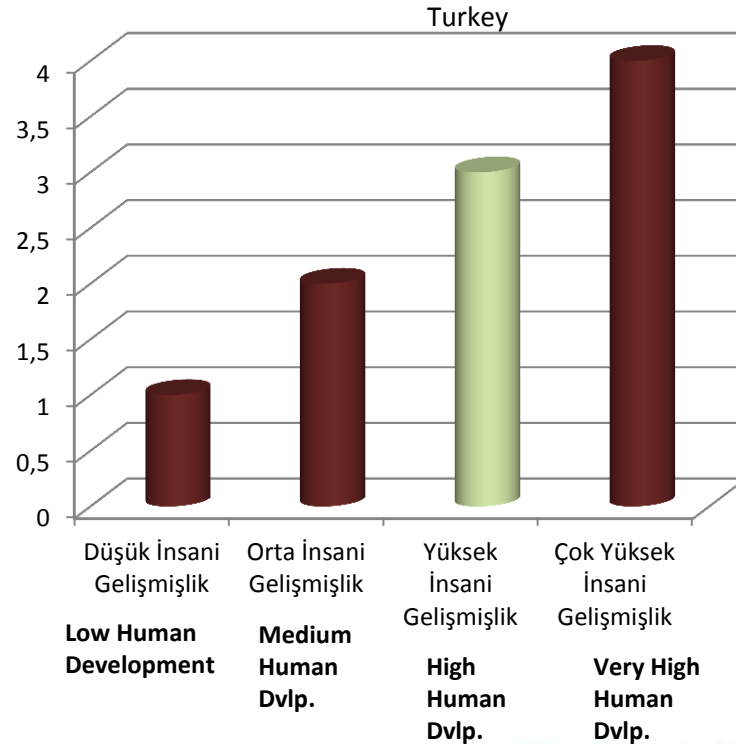
T.C.
AİLE VE
SOSYAL POLİTİKALAR
BAKANLIĞI

Human Development Index

2002



2010



FAMILY ASSISTANCES

- Food Assistances
- Sheltering Assistances
- Social Housing Project
- Heating Assistances
- Donation Program for Women Whose Husbands Are Dead
- Assistance Provided for the Needy Families of the Private

EDUCATION ASSISTANCES

- Educational Material Assistances
- **Conditional Education Assistances**
- Lunch Assistance
- Free Book
- Transportation, Sheltering and Food Assistance for the Students
- Bussing System for the Handicapped Students
- Building Dormitories

HEALTH ASSISTANCES

- Conditional Health Assistances (Health and Pregnancy) (CHA)
- Assistances for the Needs of the Handicapped

ASSISTANCES FOR SPECIFIC PURPOSES

- Public Soup-Kitchens
- Disaster Relief

ASSISTANCES IMPLEMENTED ACCORDING TO THE LAW NO.2022

- Allowances for the Elder Person
- Allowances for the Handicapped
- Allowances for the Handicapped's Relative (Under 18)
- Payment for Silicosis Patients

HOME-CARE ALLOWANCE



T.C.
AİLE VE
SOSYAL POLİTİKALAR
BAKANLIĞI

EDUCATION ASSISTANCES

Name of the Program

- Conditional Education Assistances (CEA)

Content

- It is provided for families who do not have social security, are poor and vulnerable, on the condition that they should send their children to school.

Applicant

- Family member who is above the age of 18

Who Benefit

- Families whose children are at the age of primary and high school

Document

- RT. Identity Card

Amount

- Primary school boy: 30 TL, girl: 35 TL monthly
- High school boy: 45 TL, girl: 55 TL monthly

Payment Period

- 9 months (lump sum payment in every two months)



T.C.
AİLE VE
SOSYAL POLİTİKALAR
BAKANLIĞI

PROJECT SUPPORTS

- Income Generating Project Supports
- Social Support Project on the Rural Area



T.C.
AİLE VE
SOSYAL POLİTİKALAR
BAKANLIĞI

PROJECT SUPPORTS

Name of the Program

- Income Generating Projects

Content

- It is the business establishment supports provided in order to enable poor households to establish and sustain their business to survive, earn their income and develop their business for a long term.

Applicant

- Family member who is above the age of 18

Who Benefit

- Whole family

Document

- T.R. Identity Card
- professional certificate is needed

Amount

- Up to 15.000 TL (changing according to the project) for individual projects
- Utmost 50.000 TL for raising sheep projects, 150.000 TL for cattle breeding for group-based projects

Payment Period

- It is paid following purchasing of the goods within the scope of the project



T.C.
AİLE VE
SOSYAL POLİTİKALAR
BAKANLIĞI

PROJECT SUPPORTS

Name of the Program

- Social Support Project on the Rural Area

Content

- The project aims at enabling poor and vulnerable individuals and families living in rural areas to take part in production, marketing the agricultural production in place, increasing their income level and providing sustainability in production

Applicant

- Family member who is above the age of 18

Who Benefit

- Citizens who are needy and vulnerable and who do not have enough resources for agricultural production

Document

- T.R. Identity Card

Amount

- Cattle breeding: 4 cattles
- Rasing Sheep: 25 sheeps and a ram
- Green house: 500 m² green house

Payment Period

- It is realized in cooperation of SAS Foundation and Provincial Directorate of Agriculture. Repayments are realized as no payment in the first two years and six equal payment in the next six years.



T.C.
AİLE VE
SOSYAL POLİTİKALAR
BAKANLIĞI

ESTABLISHING SOCIAL ASSISTANCE-EMPLOYMENT RELATION

In accordance with the decision of Economic Coordination Committee, citizens who receive social assistance or who apply for assistances have been automatically registered into Turkish Labour Institution (TLI) database via Social Assistance Information System (SAIS) and Integrated Social Assistance Services Information System since April 2011.



Between the period of April 2011-December 2012, **1 million 88 thousand** people were registered into the database.



- **22.000** people were employed,
- **61.000** people attended the course,
- **39.000** people were benefited from unemployment insurance.



T.C.
AİLE VE
SOSYAL POLİTİKALAR
BAKANLIĞI

SOCIAL ASSISTANCE INFORMATION SYSTEM (SAIS)

Social Assistance Information System (SAIS):

is **an e-governance application which has been put into practice** with a 6-month study by GDSA with the aim of;

- Assurance/determination of **neediness and personal information** of citizens, who apply for social assistances, from central databases,
- **Providing (online) data sharing between institutions** for preventing reiterated assistances.

TR Identity No ☐ Search ☐ 14 Institutions ☐ 28 Different Data ☐
Report (in 10 seconds)

It is was rewarded by the Turkish Presidency in 2010





T.C.
AİLE VE
SOSYAL POLİTİKALAR
BAKANLIĞI

INTEGRATED SOCIAL ASSISTANCE SERVICES (ISAS) INFORMATION SYSTEM



Project

- Integrated Social Assistance Services Information System is an information (informatics) system on which all activities are carried out in electronic environment such as receiving applications from poor and needy citizens, creating household files, searching of personal information, socio-economic condition and wealth of citizens from central databases, keeping report regarding social observing realized in site about socio-economic condition of the household, determining neediness of citizen, giving bank order for assistance payments and automatic accounting regarding all assistances.

Aim

- To create common database (**poverty inventory**) in the field of social assistances (6.4 million households)
- To transfer all procedures of GDSA and SASF into electronic environment,
- To keep all social assistances provided by public institutions under a central database,
- To exchange data with NGOs and local administrations



T.C.
AİLE VE
SOSYAL POLİTİKALAR
BAKANLIĞI



VISION OF 2023

- The rate of social expenditures to GDP will be raised to 3%.
- Poverty (food and non-food) will be permanently diminished to below 10%.
- A social support system will be established in which social supports and social services are provided integratedly as «right-based».
- The condition of the family will be taken as a basis in social supports.
- The amount of social support will be enough to relieve the poor family of poverty.
- If people who are registered employee become poor, they will be supported with social assistances.
- The Integrated Social Assistance Services Project will be completed.
- The Scoring Formula Project will be completed.
- 100.000 Social House units will be built for the poor.
- There will be no people who have to live with a 4.3 dollar income.

Recommendations:

What you need to be successful in poverty alleviation?

1. Strong political/administrative leadership
2. Human resources: employ expert and qualified personnel
3. Information technology: create an integrated information system in poverty alleviation, providing data from related ministries.
4. Impact analysis and program evaluation: will improve the quality of your social transfers and will use public money more effectively and smartly.



REPUBLIC OF TURKEY,
MINISTRY OF FAMILY AND
SOCIAL POLICIES



THANK YOU

ersin.kaya@aile.gov.tr

Phone: +90 (312) 705 80 37