



REPUBLIC OF TURKEY
MINISTRY OF FAMILY AND SOCIAL
POLICY
General Directorate of Social Assistance

Accessibility of Vulnerable Groups to Social Protection Programmes TURKEY

Nevzat KUNDURACI

Head of Department

Senior Expert on Family and Social Policy

ANKARA, Turkey

FROM GENERAL&CASUAL SUBSIDIES TO SPECIALIZED®ULAR ASSISTANCE PROGRAMS IN TURKEY

After the negative effects of 2002 global economic crisis has hit Turkey, a significant pursuit for a strong economical/social assistance system has been appeared;

- ✓ More target-oriented and accountable social assistance implementations has been launched
- ✓ IT systems have been successfully integrated to minimise bureaucratic processes



FROM GENERAL&CASUAL SUBSIDIES TO SPECIALIZED®ULAR ASSISTANCE PROGRAMS IN TURKEY

Many Social Assistance Programs are being implemented by General Directorate of Social Assistance (GDSA)
They are basically divided into 5 different categories;

1. Family Assistances
2. Education Assistances
3. Assistances for Specific Purposes
- 4. Thematic Central Regular Cash Transfers**
5. Allowance Programmes to the Specific Groups



SPECIALIZED®ULAR CASH TRANSFER PROGRAMS

CONDITIONAL CASH PROGRAMS

EDUCATION

HEALTH

UNCONDITIONAL CASH PROGRAMS

For Widow Women
whose Husbands are
Dead

For Needy Families
of the Private

Orphans in Needy
Families of the
Private

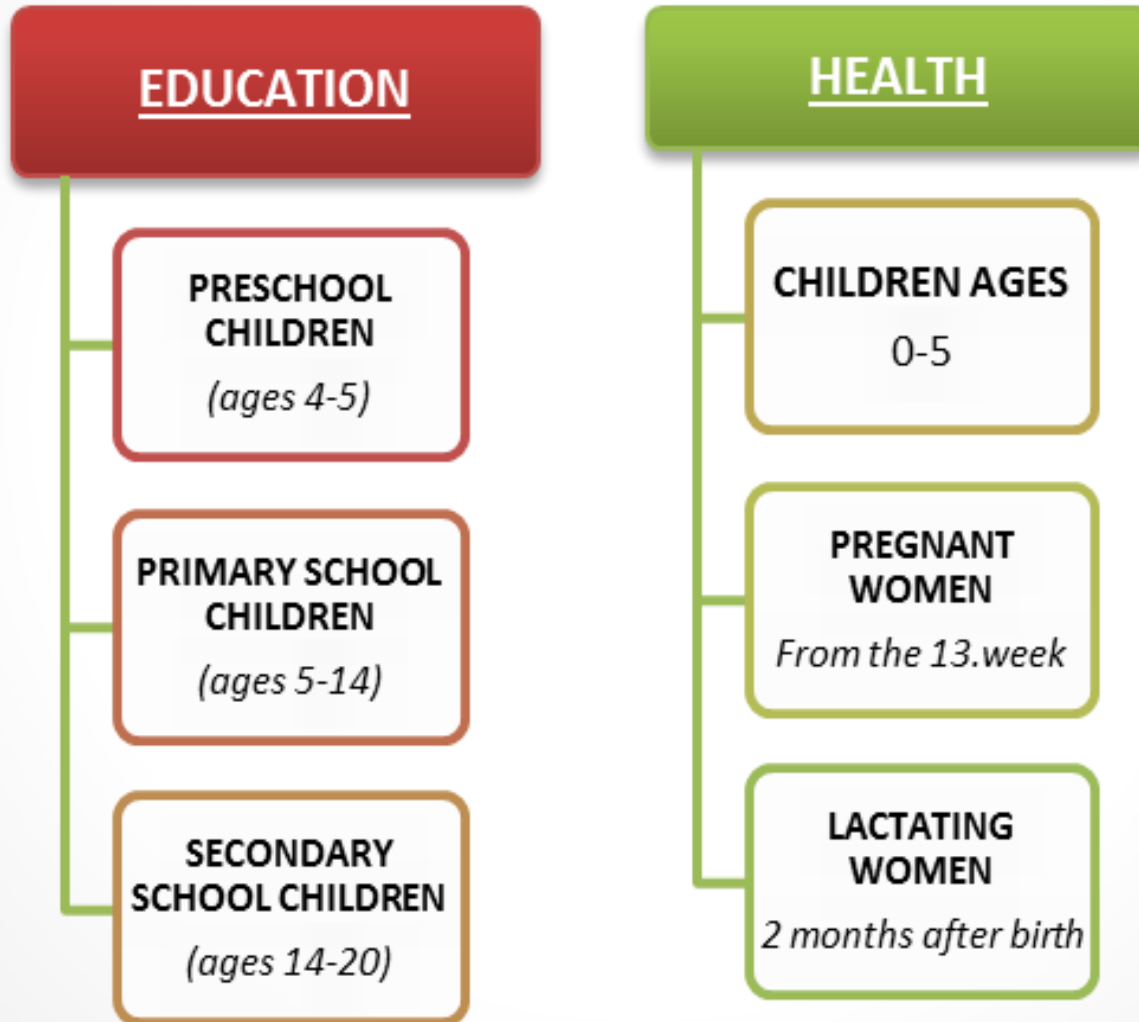
Needy Families of
the Orphan Children

Conditional Cash Transfer Programs in Turkey

In Turkey, CCT program is launched in 2003. App. **2 billion** US \$ has been allocated to about **3,5 million** beneficiary households. It is implemented through a fully web-based software from application to payments and also monitoring and evaluation.



TARGET GROUP OF THE CCT PROGRAM





SOCIAL ASSISTANCE AND ACTIVATION POLICIES

- Working-age social assistance beneficiaries are directed to Turkish Employment Agency's (TEA) database automatically.**
- In 2015, nearly 364.000 social assistance beneficiaries' datas sent to TEA.**
- For last 4 years approx. 50 thousands of social assistance beneficiaries have been employed.**
- Incentive supports for social assistance beneficiaries are also activated.**



INCENTIVE SUPPORTS TO DISADVANTAGED GROUPS



SPECIAL POLICIES, TRAININGS, PROJECTS AND PROGRAMMES FOR DISADVANTAGED GROUPS

- ❖ İŞKUR establishes some special trainings, projects and programmes for disadvantaged groups.
- ❖ Target group based implementations are being executed.
- ❖ Especially women, long-term unemployed people, drug users etc.
- ❖ There is a special budget is allocated for these trainings and projects and İŞKUR has a collaboration with other related institutions and NGOs.

PROJECTS FOR DISABLED TO ESTABLISH THEIR OWN BUSINESS

İŞKUR provides totally 36.000 TL support for the presented project by disabled who has a certificate of entrepreneurship training, vocational training or already has a certificate in the area that they want to run business;

- ***Support for Establishment Operations:*** Needed operations, permissions, approvals and licenses for the establishment of business, maximum support amount is **2.000 TL.**
- ***Support for Establishment Expenditures:*** Throughout 12 months, maximum support amount for expenditures of establishment (electricity, communication, water, climate etc.) is **4.000 TL.**
- ***Support for Establishment:*** After establishing, throughout 12 months, for the expenditures (machines, equipments, software, hardware, consumables, office materials etc. that relates to establishment's principal sphere of activities), maximum support amount is **30.000 TL.**



JOB AND VOCATIONAL COUNSELLING SERVICES FOR YOUTH

In 2015;

- 844.974 individual interviews made with 617.267 youth between age 15-24.
- 21.884 visits to education institutions.
- 164.440 vocational high school and university students in 3.323 groups trained for job seeking process in terms of preparation to work and aiming their demand of work to their own properties.
- Journal for Support to Profession Selection
- University Contact Points



JOB AND VOCATIONAL COUNSELLING SERVICES FOR WOMEN

In 2015;

- ❖ 1.306.065 individual interviews made with 944.289 women counselees
- ❖ 340.000 individual interviews made with 256.555 youth women counselees (age 15-24)
- ❖ 25.898 individual interviews made with 14.072 disabled women counselees (age 15-24)

Services for Victims of Violence Women

- ❖ Job seeking education training given to 350 victims of violence women.

PUBLIC WORK PROGRAMMES

- ❖ The target group is long-term unemployed in the labour market
- ❖ The aim is to adapt the participants into the labour market.
 - ❖ Up to 9 months employment on the public services
 - ❖ Minimum wage is paid.

CHILDREN'S ACCESS TO SOCIAL SERVICES IN TURKEY

- **Regarding legal assistance for children**, to inform children under protection and care in Care and Social Rehabilitation Centers affiliated to General Directorate of Child Services and their families about legal effects of their rights and behaviors, legal assistance for children is provided both law services in provincial directorates and through provincial law procedural directorates.
- **Regarding children's knowledge of their rights, including dissemination of adequate information;** “**Child Rights Committees**” maintain their activities within the body of Family and Social Policies Provincial Directorates since 2000 in order to improve child rights culture and raise conscious in our country.

The Services For Children

- **The Service Perspective of General Directorate of Child Services :**
Children should be primarily cared within their own family or relatives, where this is not possible, then institutional care is preferred.
- **Family Based Care and Support Services in Turkey**
 - **Socio-Economic Support Services for the children within their own families**
 - **Foster family services**
 - **Family based care by means of adoption**
 - **Institutional care in cases when family care is disadvantageous or impossible**
 - **Free Nursery Service**
 - **Job Placement Service.**



Service Analysis

- Children should be primarily cared within their own family or relatives,
- As part of socio-economic support, currently **93.256** children are living with their own families instead of residential care. Recently, socio-economic support payment amount is 622 TL averagely.
- Since 2005, **11.003** children who are in residential care has been returned to their families and are still supported.
- While 21 000 children were in institutional care in 2005, currently **12.667** children are in institutional care.
- Total number of adopted children is **14.515**
- **4.615** children are cared near foster families.
- As of 2016, **63.219** children are provided free nursery service country-wide.
- **40.438** individuals have been employed since 1988 as of October 2015



REPUBLIC OF TURKEY
MINISTRY OF FAMILY AND SOCIAL POLICY
General Directorate of Social Assistance



THANKS FOR YOUR ATTENTION...
