

21th Meeting of the COMCEC Poverty Alleviation Working Group:

“Effective Vocational Education and Training Strategies to reduce Youth Unemployment in Indonesia”

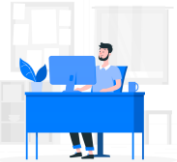
Ankara, 9-10 Oktober 2023

Employment and Unemployment Rate in Indonesia



Working Age Population in Indonesia

211,59 million people



Work Force

146.62 million people

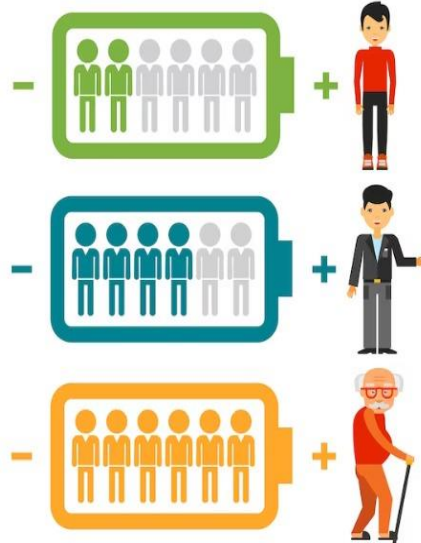


Unemployment

7,99 million people

Open Unemployment Rate is the Percentage of the Unemployed to the Workforce

National Open Unemployment Rate
5,45%



Open Unemployment Rate in the Young Age Group reached 16.46% which means that from 100 people aged 15-24 years who are part of the workforce, there are around 16 people who are unemployed

Men
16.36%

Women
16.62%

Urban Areas
19.17%

Rural Areas
13.25%

Youth Unemployment rate is High, The percentage is five times Higher than the adult unemployment Rate

Open Unemployment rate according to the Age Group (%)

Age group	2017 Agt	2018 Feb	2018 Agt	2019 Feb	2019 Agt	2020 Feb	2020 Agt	2021 Feb	2021 Agt	2022 Feb	2022 Agt
15 - 19	27.54	17,78	26,67	17,16	25,87	21,32	24,34	18,88	23,91	18,94	29,08
20 - 24	16.62	15,82	16,73	14,68	15,62	14,3	18,71	17,66	17,73	16,36	17,02
25 - 29	6.76	7,42	6,99	7,62	7,18	7,01	9,77	9,27	9,26	7,82	7,13
30 - 34	3.4	4,07	3,47	3,62	3,55	3,26	5,75	4,94	5,43	4,47	3,7
35 - 39	2.45	2,43	2,49	2,59	2,26	2,63	4,32	3,74	4,02	3,87	2,65
40 - 44	1.86	2,01	1,81	2,09	2,08	2,02	3,92	3,55	3,42	3,59	2,43
45 - 49	1.51	1,8	1,58	2,2	1,82	1,88	3,54	3,27	3,3	3,97	2,33
50 - 54	1.54	1,72	1,4	1,67	1,66	2,09	3,61	3,01	2,18	3,74	2,38
55 - 59	1.73	1,73	1,25	1,65	1,3	2,43	3,21	3,17	1,98	1,16	2,37
60+	1.52	0,79	0,61	1,75	0,66	1,08	1,7	1,29	2,73	1,22	2,85
Total	5.5	5,13	5,34	5,01	5,28	4,99	7,07	6,26	6,49	5,83	5,86

Source: National Labor Force Survey, 2017-2022

Youth population without activities (not currently studying, working or taking training - NEET) tends to increase.

NEET women are much higher than men and are increasing in all levels of education

	2021	2022
Sex		
Men	18.94	18.79
Women	25.93	27.76
Living place		
Rural	21.09	21.63
Urban	24.26	24.57

Year	Level of Education	Men	Women	Total
2021	Elementary school	20.45	38.12	27.57
	Junior High School	8.61	16.16	12.35
	Senior High School	23.95	29.11	26.82
	Vocational school	27.14	31.67	29.09
	University	27.42	27.73	27.62
	2022	Elementary school	21.74	39.72
Junior High School		8.77	17.23	12.97
Senior High School		25.05	32.79	29.22
Vocational school		25.40	33.67	29.00
University		30.18	29.31	29.60

1 in 3 women with high school education and above, have no activities

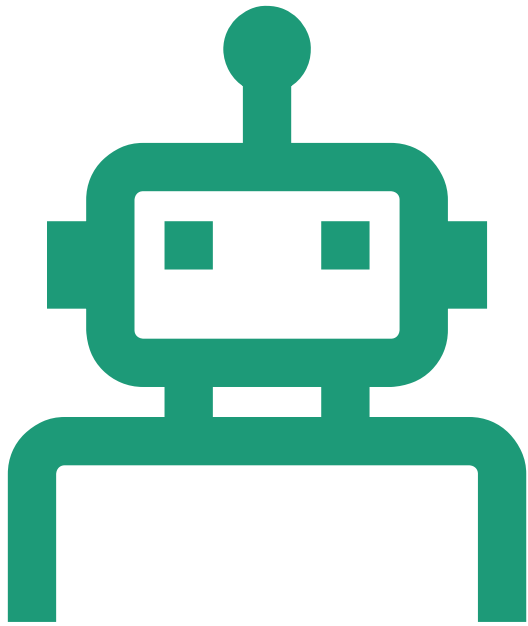
Source: National Labor Force Survey: 2021-2022



Commitment of the Indonesian Government

- Indonesian Government is committed to handle the unemployment in Indonesia, including youth unemployment. Regulations:
 - Law number 20 of 2023, Concerning National Education System
 - Presidential Instruction Number 9 of 2016 Regarding Revitalization of Vocational High School
 - Presidential Regulation Number 68 of 2022 concerning Revitalization of Vocational Education and Vocational Training
- The Ministry of Education, Culture, research and Technology responsible to coordinate Vocational Education Program in Indonesia
- The Ministry of Manpower responsible to coordinate the Vocational Training program in Indonesia

Vocational Education and Training (VET) through Vocational School Program



- The target of this program is young people of school age who are continuing their education at the upper middle school age
- The number of vocational school throughout Indonesia is 14.385 schools:
 - 3.684 (25.6%) Public Vocational Schools
 - 10.701 (74.4%) private vocational schools
- The number of vocational school students throughout Indonesia is 5.115.545 people.
 - 2.380.074 students in public vocational schools
 - 2.735.471 people in private vocational schools

Course and Training for Young people

- The target group is people from all different group (including youth, starting from the age of 15 who need knowledge and life skills to develop themselves)
 - The aim of this program is to develop their profession, work, and to become an entrepreneur and/or continue to a higher level education (Article 26 paragraph (5) National Education System Law)
- The number of validated course institutions in Indonesia is 10.652 institutions.
 - Based on the Data in 2021, 2.940.249 participants have taken the course, either independently or with government assistance.
- The Ministry of Education and Culture has implemented entrepreneurship programs for young people:
 - **Work Skills Education** is an educational service program through courses and training by developing competencies needed by industry. Targeted participants are young people, aged between 17-25 years and are still unemployed. Beneficiaries are preferably from poor families
 - **Entrepreneurial skills education** is an educational service program through courses and training to provide knowledge, skills and foster an entrepreneurial mental attitude. The aim of this program is to manage one's potential as well as the environment which can be used as provisions to become an entrepreneur
 - Data of Tracer study (young people who already graduated from these programs) can be seen on the following dashboard page https://banper.binsuslat.kemdikbud.go.id/pkk/rekapitulasi_2023

Vocational Education and Training Through Job Training Center / Vocational Training Center



Ministry of Man Power

- The target of this program is the wider community (including young people in the transition period, school age or working age with various educational backgrounds)
- Participants are taking part in competency-based training, apprenticeships at home and/or abroad. The training scheme is carried out with *on the job training* and *off the job training*
- The number of Job Training Center:
 - There are 255 Institutions spread across 21 regions in Indonesia
 - There 3757 various types of communities spread across 19 regions in Indonesia
- The number of workers who have been trained and are working reached 136.524 people in 2022
- The Ministry of Manpower is also developing a Training HUB and talent corner program and has also prepared a ready-to-work platform, which connects the world of work with the vocational training program

**)source: Ministry of manpower, 2022*

Other Policies and Program Related to Vocational Education and Training (Through Ministry of Social Affairs)



- Provide vocational training program for beneficiaries or vulnerable groups (including youth). One of the entrepreneurship program carry out by Ministry of Social Affairs is called PENA. Activities of this program, such as:
 - Young people with disabilities will have a training on making assistive devices (e.g, adaptive sticks, three wheeled motorbikes, intelligent disability bracelets)
 - Young people in the urban area, such in Papua (categorized as poor people) have a basic training for mechanics and heavy equipment operator
 - https://youtu.be/BXxda6PD_Qs?si=y2-vbMnlXL-fbTR1
- Provide vocational training for children/ youth who are staying in Social Rehabilitation Institution, such as haircuts, clothing and sewing patterns, as well as barista training
- Provide Grant Funds to the young beneficiaries. The budget allocation can be used to support social entrepreneurship programs for youth, including strengthening capacity and providing accessibility for people with social problems

Other Policies Related to Vocational Education and Training (Ministry of National Development Planning)

Budgeting



- Optimizing entrepreneurship programs for youth by giving access to all the Ministry (apart from the Ministry of Manpower) to carry out vocational training



Thank You
