

Indonesia Eximbank

Property of Indonesia Eximbank / LPEI

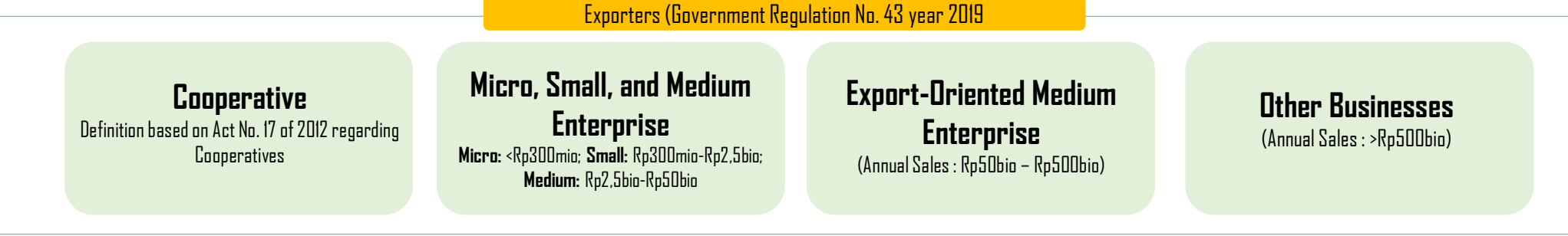
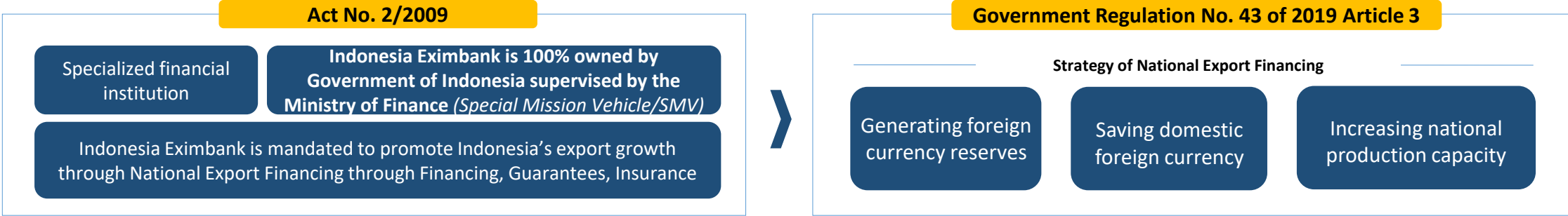
April 2026

This document and/or any files transmitted with it are confidential and intended solely for the use of the individual or entity to whom they are intended, and is intended only for the institution that named. This document contains confidential information and is intended only for the institution that named. If you are not the named or proper audience you should not disseminate, distribute or copy this document. If you are not the intended recipient and/or audience you are notified that disclosing, copying, distributing or taking any action in reliance on the contents of this information is strictly prohibited.

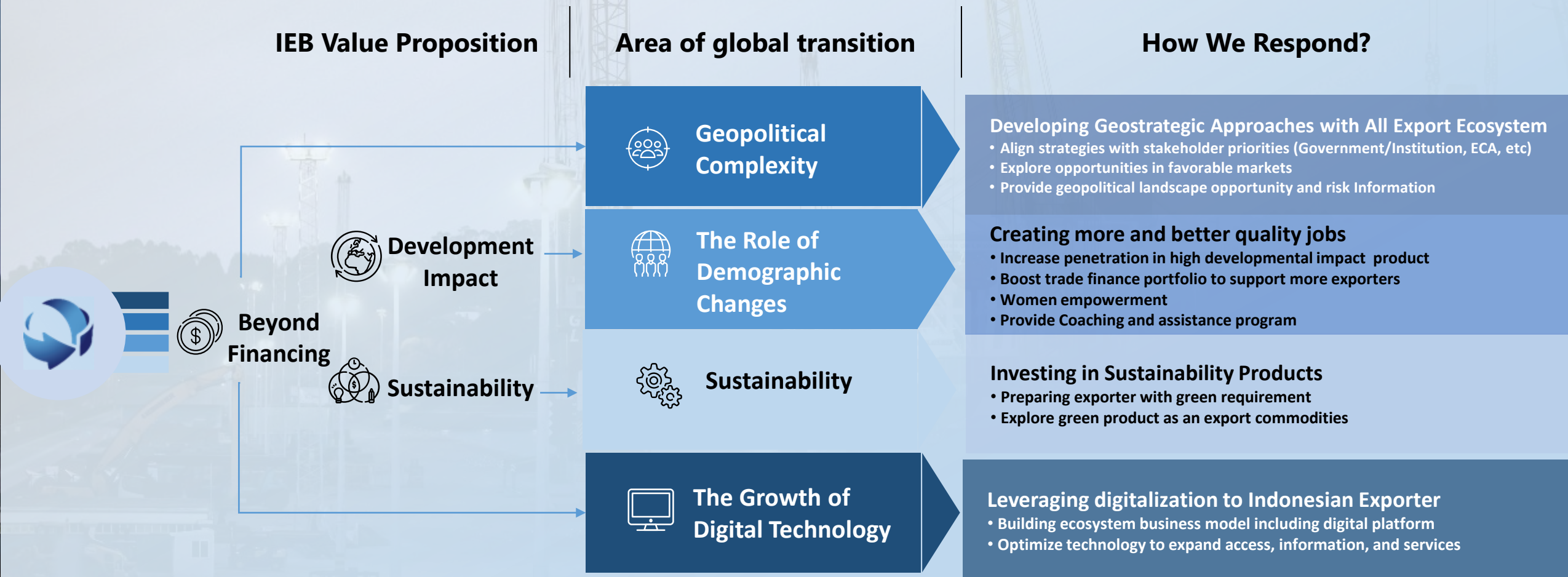
© 2024 – Property of LPEI

RISE STRONGER FOR A BRIGHTER TOMORROW

Indonesia Eximbank supports national exports by developing exporters businesses to be globally competitive



In respond to global transitions in the future, Indonesia Eximbank has incorporated three value proposition as key strategic initiatives



Business Pillars (with Conventional and Sharia Scheme)



Financing

- Trade Finance
- Working Capital
- Investment



Guarantee

- Credit Guarantee
- Project Guarantee



Insurance

- Trade Credit
- Marine Cargo



Advisory

- Coaching Program
- Business Matching
- Community Development
- Digital Platform

Sharia Business of Indonesia Eximbank

1

Supporting export for Halal Product



PHARMA AND
COSMETICS



HALAL FOOD



MODEST FASHION

2

Supporting export to OIC Country



And many more..

Collaboration through Forum and Partnership



Asian Exim Banks Forum

National Interest Account - ("NIA")

Program-Based Scheme



NIA - Region

Supports exporters to penetrate destination countries in Africa, the Middle East, South Asia, Latin America and Eastern Europe



NIA – Priority Local Products

support the export of 18 national priority products through the provision of Trade Finance facilities.



NIA – SME's

Support the export activities of export-oriented Small and Medium Enterprises (SMEs)



NIA – Guarantee and Insurance

Support the export of product/service in the government's priority sector by providing guarantee and insurance facility.



NIA – Pharmaceutical and Medical

support the development and competitiveness of the pharmaceutical and medical device industries



NIA – Transportation

support the development of the transportation equipment industry, including shipbuilding, railway systems, aerospace, special-purpose vehicles, components

Project-Based Scheme



NIA – Marina

Support the development of marina infrastructure and tourism-related facilities in Super Priority Tourism Destinations (DPSP)



NIA - Aviation

support the development of the national aviation industry



NIA – Tourism

support the development of the Mandalika Special Economic Zone (SEZ)

Indonesia Eximbank has facilitated the exporters through the strategic utilization of the National Interest Account (NIA)

Support to the Aircraft Industry



Project: 1 Unit CN 235 Medium Aircraft Wing
Export Destination: Nepal
Customer: Nepalese Army & Senegal (Air Force)



Project: 1 Unit CN 235-220 Maritime Patrol Aircraft
Export Destination: Senegal
Customer: Senegal Air Force



Project: 6 Units NC212i
Export Destination: Philippines
Customer: Phil Department of National Defense

Support to the Railway Industry



Project: 450 Units Container Flat Top Wagon
Export Destination: New Zealand
Customer: UGL/Kiwi Rail



Project: 150 and 250 Passenger Train
Export Destination: Bangladesh
Customer: Bangladesh Railway

Alone we are strong, together we are stronger



Collaborate with us

Find areas of mutual interest between Indonesia and your country

- Sectoral focus e.g., aircraft, commodities, green energy, etc.
- Region focus e.g., Africa, Asia
- Mandate focus e.g., sustainable development



Co-finance together

Jointly evaluate pipeline and fund projects / companies through financing and guarantee



Cross-share knowledge

- Share trade data and intelligence
- Matching buyers and sellers to encourage trade flows
- Provide joint regulatory assistance

THANK

YOU

*Let's get connected:
Berlianto Wibowo (Berli)
berlianto.wibowo@indonesiaeximbank.go.id*

Prosperity Tower Lantai 1, District 8,
Sudirman Central Business District (SCBD) Lot 28
Jl. Jend. Sudirman Kav. 52-53 Jakarta 12190

Tel. (62-21) 395 03600

Fax. (62-21) 395 03699

Email: corpsec@indonesiaeximbank.go.id

www.indonesiaeximbank.go.id