



Making Cooperation Work
COMCEC STRATEGY
For Building an Interdependent Islamic World

*Implementation of the COMCEC
Ministerial Policy Recommendations*

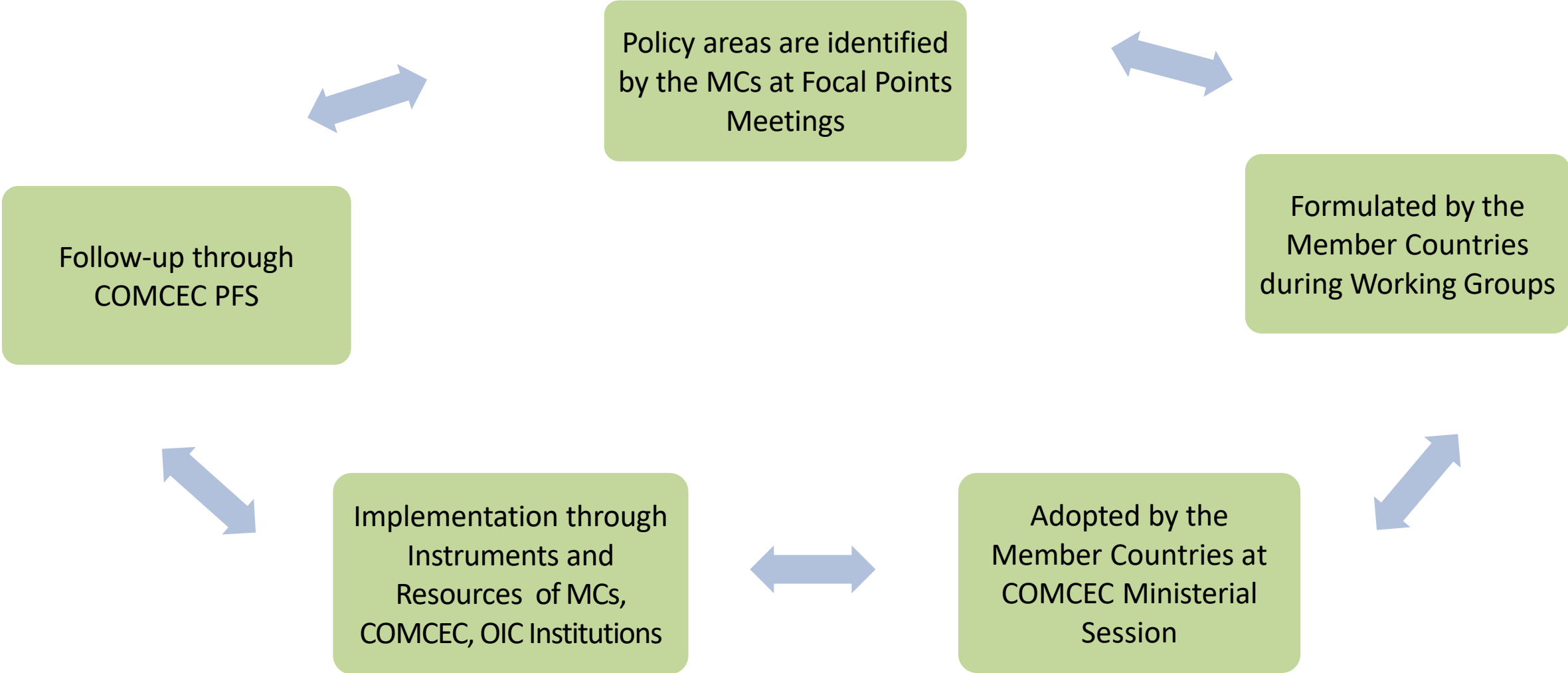
Betül ÖZAL KARAHAN
Working Group Coordinator, CCO

9-10 June 2026

OUTLINE

1. Stages of Policy Formulation and Implementation Process
2. Formulation of COMCEC Policy Recommendations by the Member Countries
3. Implementation and Following-up the Implementation of the COMCEC Policy Recommendations

1) Stages of Policy Formulation and Implementation Process

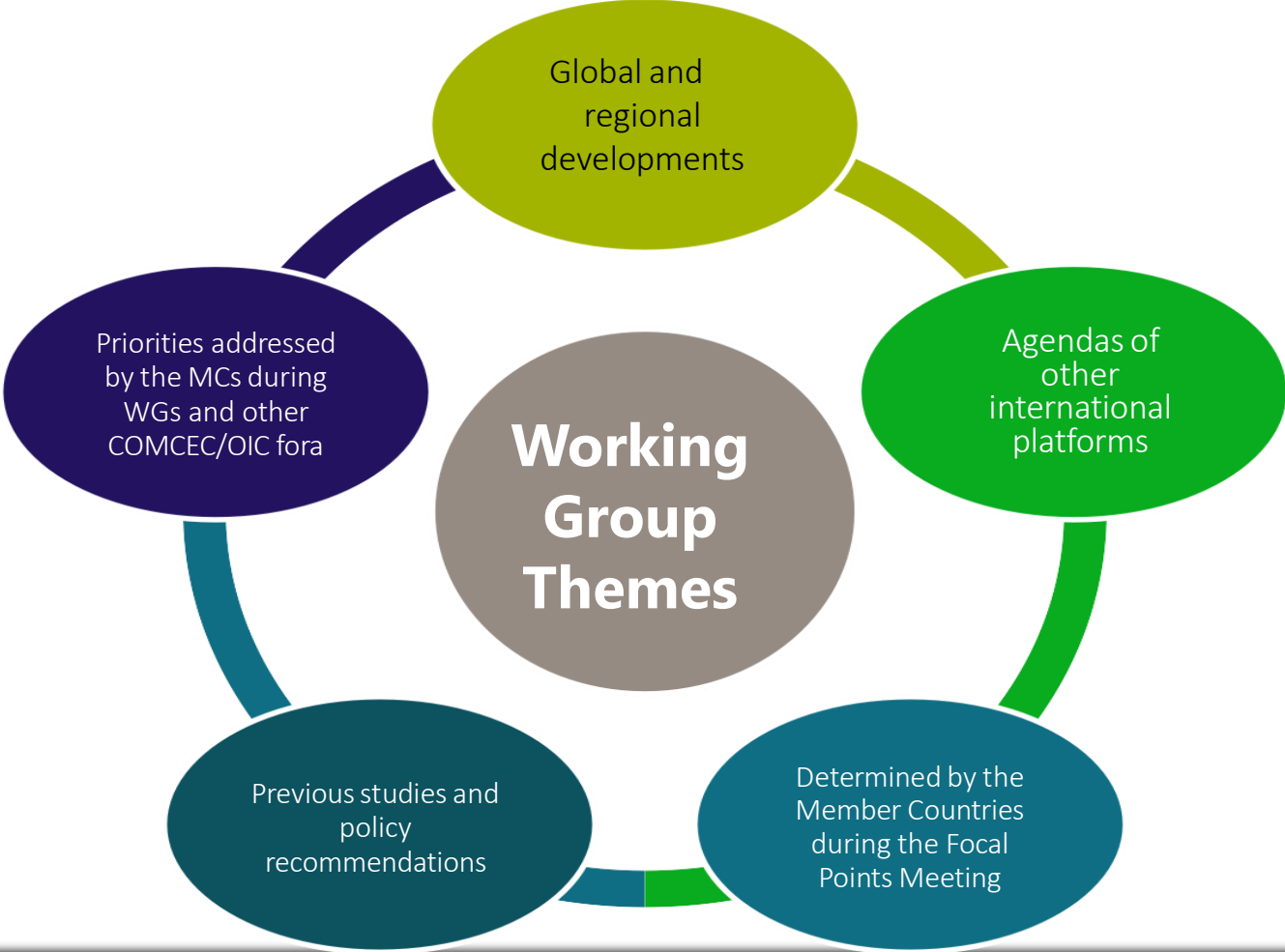


2) Formulation of Policy Recommendations by the Member Countries

Stages of Policy Formulation



2a) Identifying Challenging Policy Areas



2b) In-depth Analysis

- Latest data
- Surveys
- Field researches
- Interviews with the relevant stakeholders
- Feedbacks from the Member Countries

2c) Understanding the Policy Environment

Understanding challenges

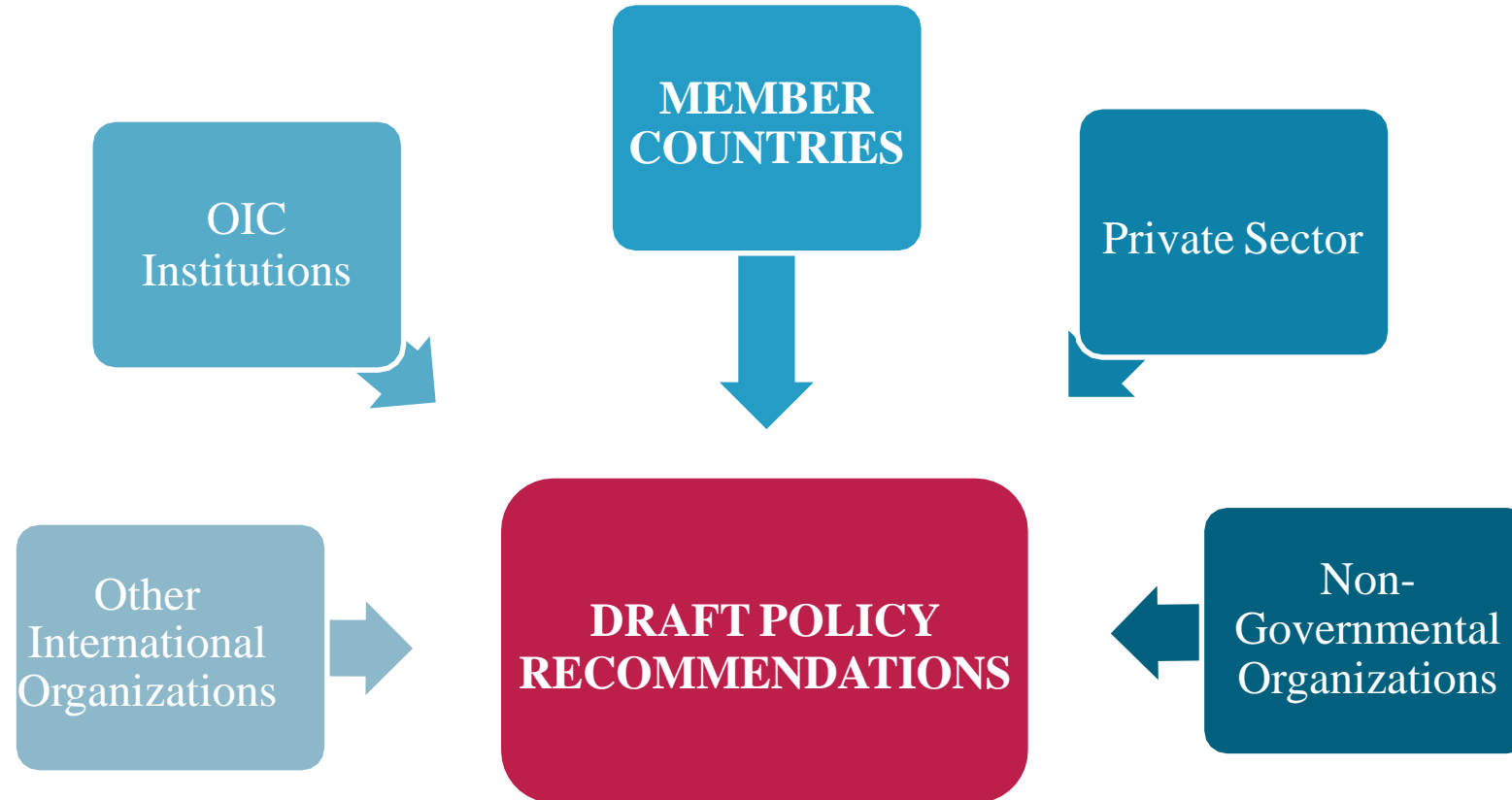
Drawing a snapshot for
legal and administrative
environment

Research Reports

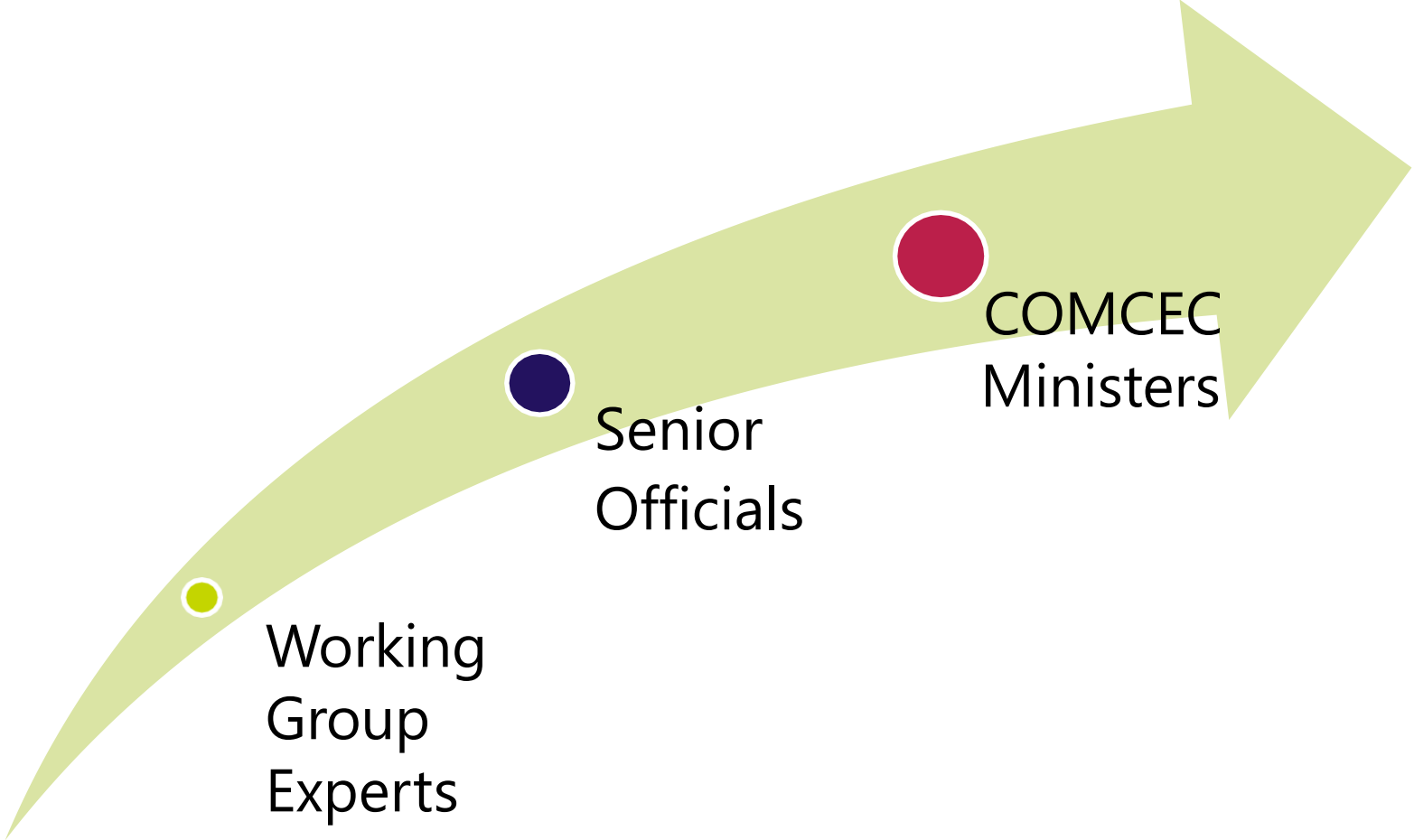
Acquiring perspectives of
responsible actors

Collecting ideas for
collaborative efforts of the
Member Countries

2d) Stakeholder Engagement in the whole process

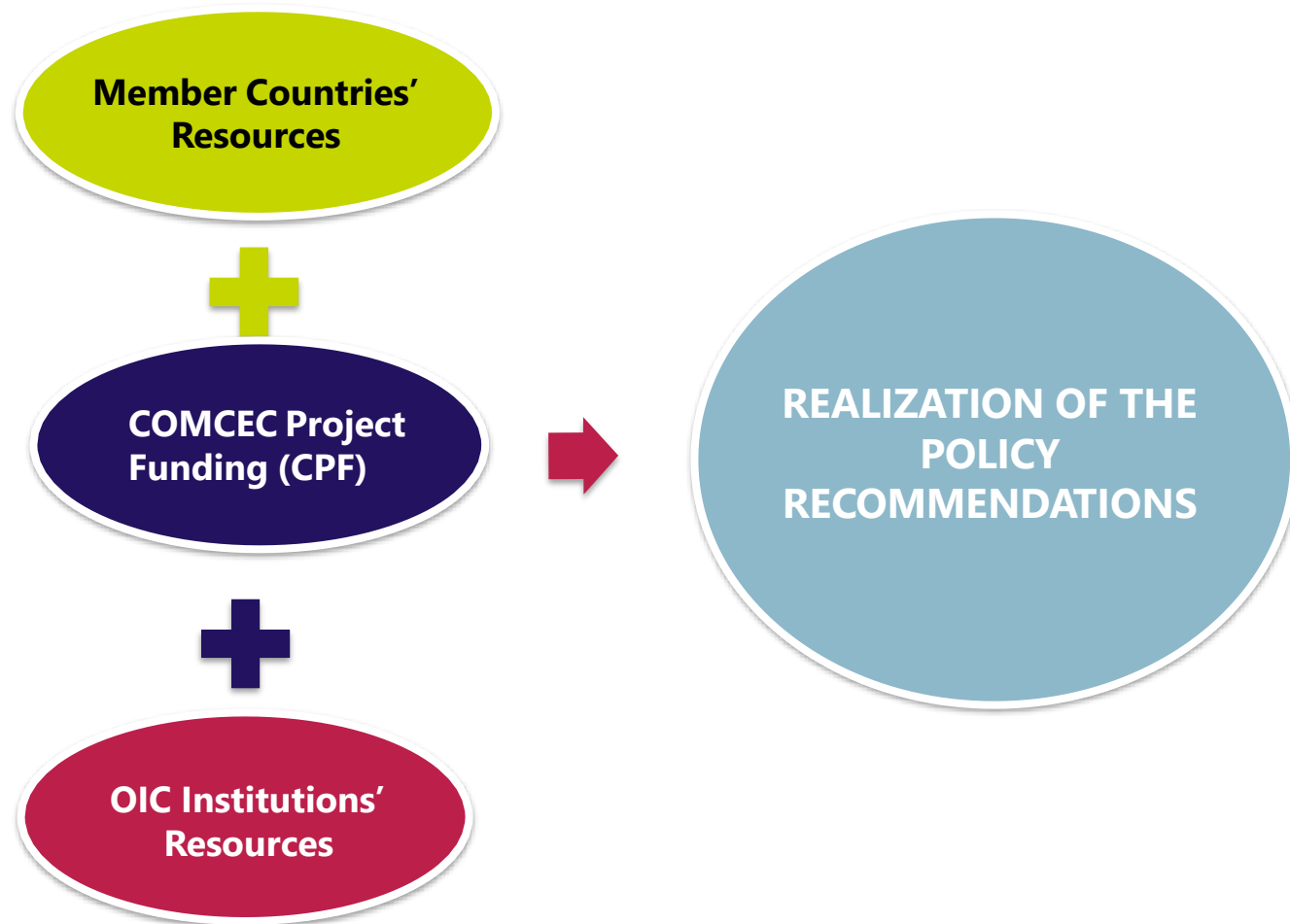


2e) Consideration and Decision by High Level



3) Implementation and Follow up of the Policy Recommendations

*Main Instruments and Resources
for the
Implementation of PRs*



3) Implementation and Following-up of the Policy Recommendations

COMCEC Policy Follow-up System (PFS)

COMCEC

COMCEC POLICY FOLLOW-UP SYSTEM

User Name:*

Password:*

LOGIN

COMCEC Coordination Office 2019

Type the same
username/password
provided for COMCEC
Project Funding

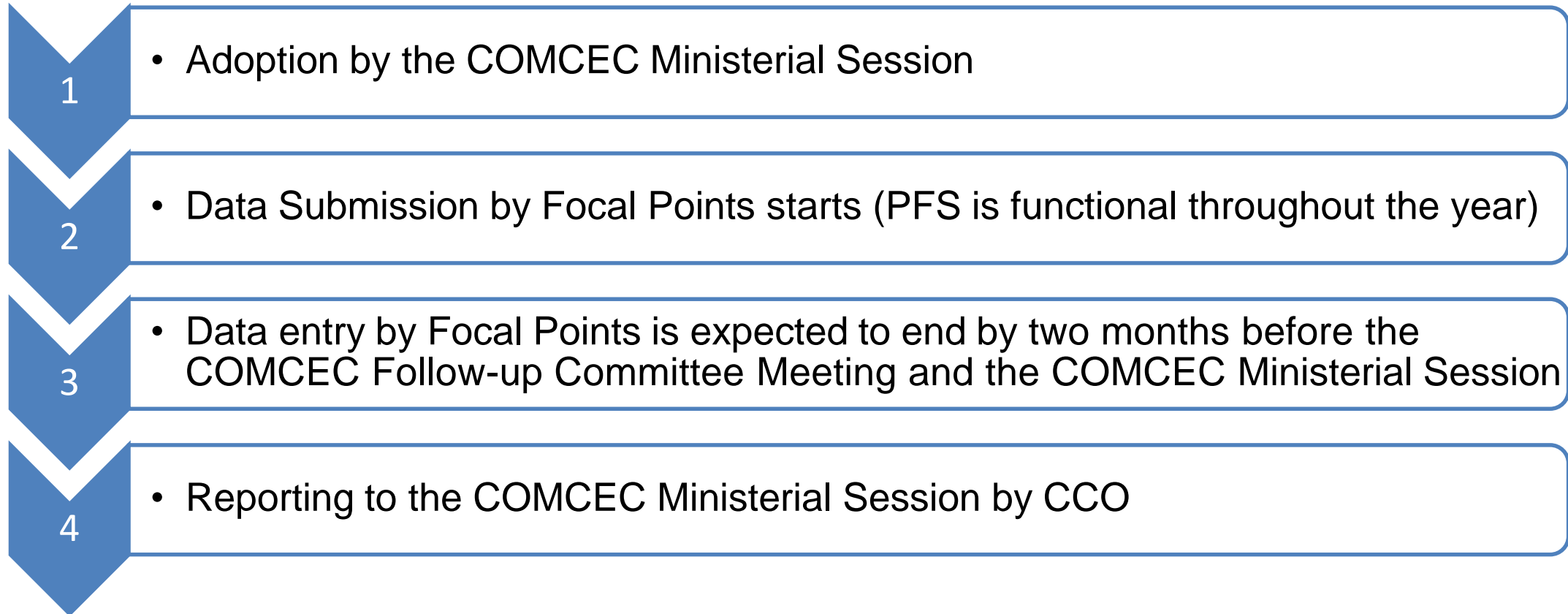
3) Implementation and Following-up of the Policy Recommendations

Features of the System

- The system is accessed through the link: pfs.comceec.org
- In order to login in the system, the Username/Password provided for COMCEC Project Funding is used
- Monitoring the last 3 years' policy recommendations adopted in the COMCEC Ministerial Sessions
- 2 submission terms in a year
- The user guideline is available on pfs.comceec.org

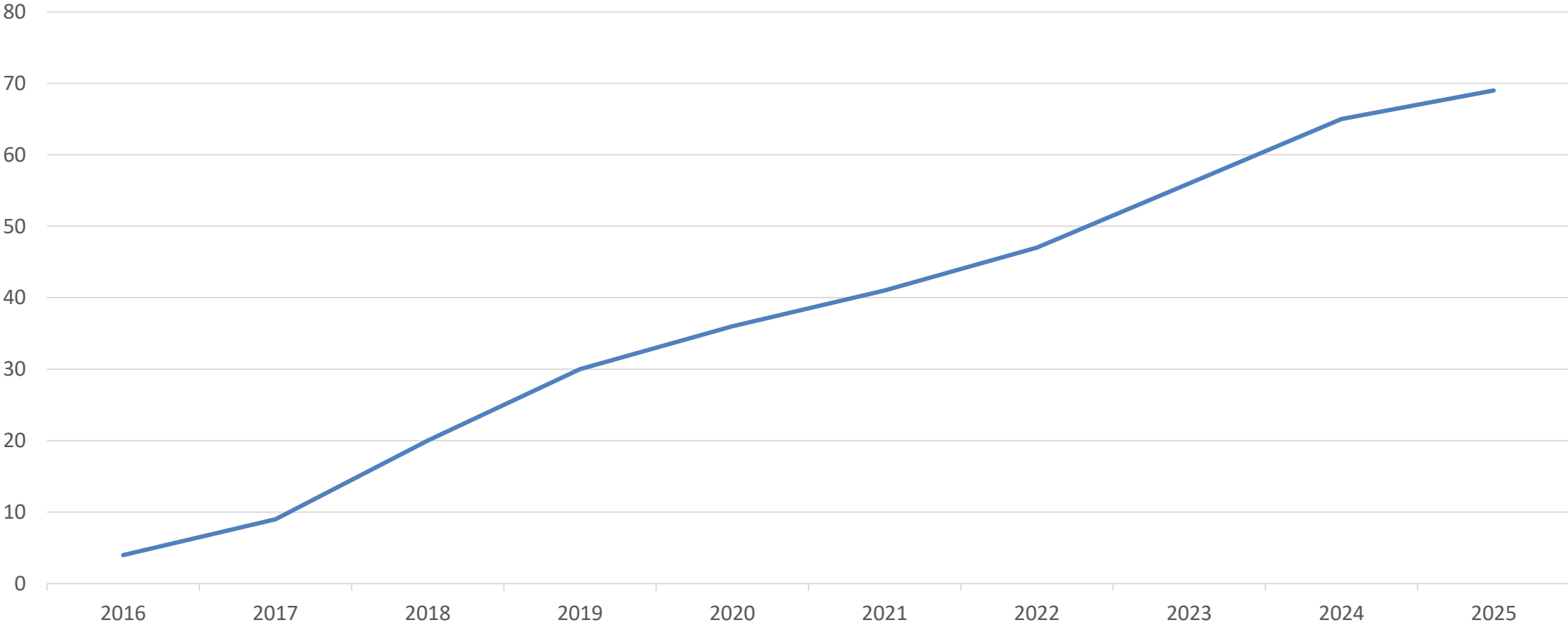
3) Implementation and Following-up of the Policy Recommendations

Timeline for COMCEC-PFS



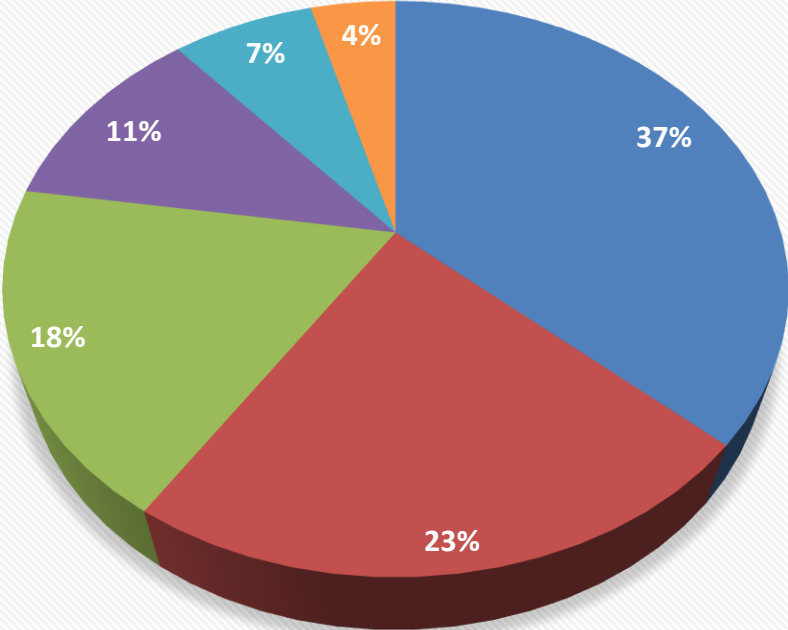
3) Implementation and Following-up of the Policy Recommendations

Cumulative Number of Countries Entering the System by Year



3) Implementation and Following-up of the Policy Recommendations

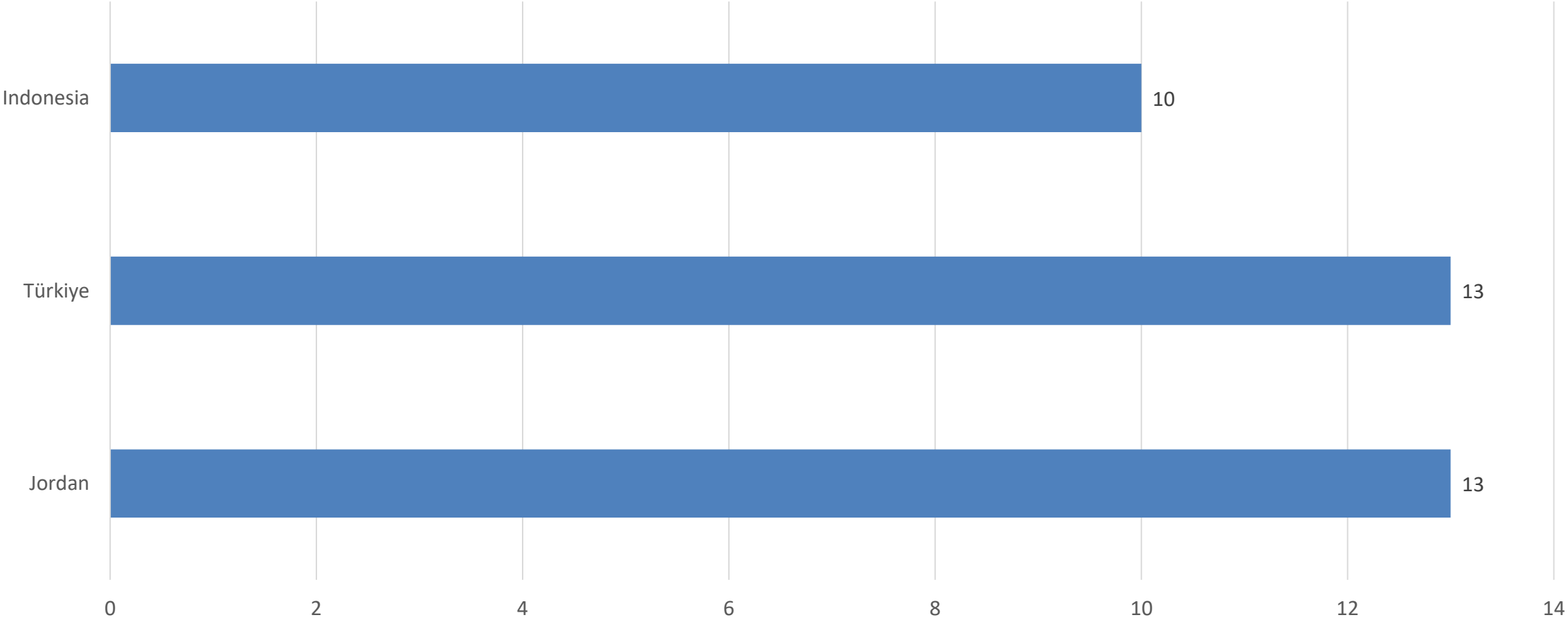
Sectoral Participation Rate (2016-2025)



■ Trade ■ Poverty Alleviation ■ Transport and Communications ■ Agriculture ■ Financial Cooperation ■ Tourism

3) Implementation and Following-up of the Policy Recommendations

Participation Frequency of the Member Countries to COMCEC PFS (2016-2025)



3) Implementation and Following-up of the Policy Recommendations

Main Expectations from the Focal Points in COMCEC Policy Follow-up System

Initiate/facilitate the necessary actions for the implementation of PRs

Collect the necessary information on the implementation of PRs from the relevant institutions/departments

Enter and submit requested data and information on the implementation of PRs into the system

Provide the updates on the implementation of the PRs



COMCEC Coordination Office

Necatibey Cad. No:110/A
06580 Ankara-TÜRKİYE

Phone : +(90) (312) 294 57 10 – 294 57 49

Facsimile : +(90)(312) 294 57 77 - (90)(312) 294 57 79

E-mail : comcec@comcec.org

Betül ÖZAL KARAHAN
Working Group Coordinator, CCO

THANK YOU

